

Broadband Data Model

Vermont Broadband Mapping Initiative

Prepared By: VT Center for Geographic Information (VCGI)
Author: Steve Sharp, VCGI
Date of Publication: 3/14/2010
Version: 4c

Table of Contents

INTRODUCTION	4
PURPOSE OF MODEL	4
SCOPE OF MODEL	4
TERMINOLOGY	5
PHYSICAL DATA MODEL	6
DATABASE FORMAT AND STRUCTURE	6
REPRESENTATION OF BROADBAND TYPES AND COMPONENTS	6
OTHER DATA MODEL ELEMENTS	10
COORDINATE SYSTEM	11
APPENDIX A – DATA MODEL DETAILS	12
SUMMARY OF DATA MODEL OBJECT CLASSES	12
DETAILED GEODATABASE SCHEMA REPORT	14

Revision History

Version	Date	Author(s)	Notes
1a	9/16/2009	Steve Sharp, VCGI	Draft released to BMT for review/input.
1b	9/23/2009	Steve Sharp, VCGI	Modifications based on feedback provided by DPS and E911.
1c	9/29/2009	Steve Sharp, VCGI	Minor modifications. Added geodatabase schema report.
1d	9/30/2009	Steve Sharp, VCGI	Added Data_Source and Source_Organization fields and domains
2a	10/8/2009	Steve Sharp, VCGI	Added BB_Input_Landline_poly layer. Other minor changes.
2b	10/15/2009	Steve Sharp, VCGI	Numerous minor tweaks
3a	12/23/2009	Steve Sharp, VCGI	Numerous significant changes based on modified data management and processing approach
3b	1/7/2010	Steve Sharp, VCGI	Tweaked naming convention to include MMY (month/year) into name to differentiate between "snapshots" of data that align with NTIA requirements.
3c	1/8/2010	Steve Sharp, VCGI	Added polygon feature class option to Fiber layer.
3d	1/12/2010	Steve Sharp, VCGI	Minor tweaks
4a	2/3/2010	Steve Sharp, VCGI	Misc changes
4c	3/14/2010	Steve Sharp, VCGI	Added DSL_points and made other minor tweaks.

Introduction

Purpose of Model

The Broadband Data Model defined herein is designed to support Vermont’s Broadband Mapping Initiative. More specifically, the data model has been designed to

1. Support the development and maintenance of a detailed broadband inventory map of Vermont.
2. Support the objectives and priorities identified in the NTIA’s State Broadband Data and Development Grant Program, including technical data delivery requirements defined in Vermont’s Broadband Mapping Initiative.
3. Support the mapping of broadband availability to the address level when possible.
4. Reduce data duplication by building upon data maintained by others.
5. Support maintainability of data through the elimination of unsustainable model components.

Vermont Broadband Mapping Initiative will result in the development of a comprehensive map of broadband service availability in the State of Vermont. Landline and wireless services (fixed and mobile) will be mapped, including wireless voice and data with information from the providers and other sources. The broadband mapping information collected and verified through this proposed effort will then support the broadband development objectives identified in the RUS Broadband Initiatives Program (BIP) and NTIA’s Broadband Technology Opportunities Program (BTOP) in Vermont. Most importantly, the geographic inventory will further refine our understanding of the location of “unserved” and “underserved” areas, supporting targeted investments in these areas.

Scope of Model

The Broadband Data Model is specifically designed to support the requirements of the NTIA State Broadband Data and Development Grant Program. However, it has also been expanded to include elements deemed necessary to support broadband infrastructure investment decisions within Vermont. These additional requirements are driven by organizations such as the Vermont Department of Public Service (DPS) and the Vermont Telecommunications Authority (VTA).

The Broadband Data Model “models” the following broadband infrastructure types and components

- ❑ Landline
 - DSL
 - Cable
 - Fiber Optic
 - Other copper-wire technologies
- ❑ Wireless
 - Fixed and mobile wireless data
 - Satellite
- ❑ Last-mile, Middle-mile, Backhaul

The data model also incorporates additional elements necessary to support NTIA’s data requirements

- ❑ Community Anchor Institutions
- ❑ Residential pricing and speed by county
- ❑ Schema for reporting broadband service at the address level
- ❑ Schema for reporting broadband service at the Census Block level
- ❑ Schema for reporting broadband service at the street level

Terminology

The following terminology is used throughout this document.

<i>NTIA</i>	National Telecommunications and Information Administration.
<i>BMT</i>	Vermont Broadband Mapping Team
<i>ESRI Geodatabase</i>	A specific GIS data layer format developed by Environmental Systems Research Institute (ESRI). ESRI has implemented three flavors: Personal Geodatabase, File Geodatabase, and Enterprise Geodatabase (ArcSDE).
<i>ESRI Shapefile</i>	A specific GIS data layer format developed by Environmental Systems Research Institute (ESRI). This is the most common GIS data layer format in the industry.
<i>Feature Class</i>	[ESRI software] In ArcGIS, a collection of geographic features with the same geometry type (such as point, line, or polygon), the same attributes, and the same spatial reference. Feature classes allow homogeneous features to be grouped into a single unit for data storage purposes. For example, highways, primary roads, and secondary roads can be grouped into a line feature class named "roads."
<i>Feature Dataset</i>	[ESRI software] In ArcGIS, a collection of feature classes stored together that share the same spatial reference; that is, they share a coordinate system, and their features fall within a common geographic area. Feature classes with different geometry types may be stored in a feature dataset.
<i>Table</i>	A set of data elements arranged in rows and columns. Each row represents a single record. Each column represents a field of the record. Rows and columns intersect to form cells, which contain a specific value for one field in a record.
<i>Relationship Class</i>	[ESRI software] In ArcGIS, an item in the geodatabase that stores information about a relationship. A relationship is an association or link between two objects in a database. Relationships can exist between spatial objects (features), between nonspatial objects (rows in a table), or between spatial and nonspatial objects.
<i>FTTH</i>	Fiber-to-the-home - Fiber reaches the boundary of the living space, such as a box on the outside wall of a home.
<i>FTTB</i>	Fiber-to-the-building - Fiber reaches the boundary of the building, such as the basement in an multidwelling unit, with the final connection to the individual living space being made via alterative means.
<i>FTTP</i>	Fiber-to-the premises - This term is used in several contexts: as a blanket term for both FTTH and FTTB, or where the fiber network includes both homes and small businesses.
<i>FTTC</i>	Fiber-to-the-cabinet or fiber-to-the-curb (both abbreviated as FTTC, although FTTCab is sometimes also used) - fiber is terminated in a street cabinet

	typically closer than 300m of the customer premises, with the final connection being copper.
<i>FTTN</i>	Fiber-to-the-node - this is very similar to FTTC, but the street cabinet is further away from the user's premises; it can be up to several kilometers away.

Physical Data Model

This section outlines how the Broadband Data Model will be implemented.

Database Format and Structure

Vermont’s Broadband Data Model will be instantiated within an ESRI Enterprise Geodatabase (ArcSDE) version 9.2+ environment. The data will be structured as a collection of Feature Datasets, Feature Classes, Tables, and Relationship Classes.

Representation of Broadband types and components

The data model will represent broadband types and components as points, lines, or polygons. This section defines how each broadband type will be represented within the geodatabase. The <mmy> portion of the name is used to identify the month and year that the data represents. These will correspond with the dates defined by the NTIA; June 30th and December 31st of each year. For example, data representing broadband coverage as of June 30th 2009 would have a date stamp of 0609.

- ❑ **DSL coverage (BB<mmy>_DSL_poly and point):** DSL coverage will be mapped as service location points depicting specific locations and addresses where DSL service is available and/or as polygons depicting the areas where service is available. Attributes indicating the type of DSL service (Asymmetric xDSL or Symmetric xDSL) and speed (advertised and typical) within each distinct service area will be included.
- ❑ **Cable coverage (BB<mmy>_Cable_line):** Cable lines will be mapped to Vermont’s high-accuracy E911 road centerline layer*¹, and therefore represented as lines in the data model. Roads or sections of roads will be flagged with attributes indicating the type of cable service (Cable Modem - DOCSIS 3.0, Cable Modem – Other, Cable TV Only – No Broadband) and speed (advertised and typical). These attributes will be imbedded directly into a copy E911’s road centerline data.
- ❑ **Fiber Optic coverage (BB<mmy>_Fiber_point and poly):** Fiber optic coverage will be mapped as service location points depicting specific locations and addresses where fiber optic service is available and/or as polygons depicting the areas where service is available. All points will include attributes indicating the type*² of fiber optic service (FTTH and FTTB) and speed (advertised and typical) at each service location.

¹ The E911 road centerline layer includes all public and private roads in the State of Vermont. It is actively maintained by VT E911 at a horizontal accuracy of +/-5 meters.

² Address-level fiber optic availability will be limited to FTTH and FTTB types. FTTP, FTTC and FTTN will be loaded into the last-mile, middle-mile, and backhaul point layer.

- ❑ **Other Wireline coverage (BB<mmy>_OtherWireline_point):** Other copper wireline coverage will be mapped as service location points depicting specific locations and addresses where other copper wireline service (Ethernet over copper and T-1) is available. All points will include attributes indicating the type of other wireline service (Ethernet over copper or T-1) and speed (advertised and typical) at each service location.

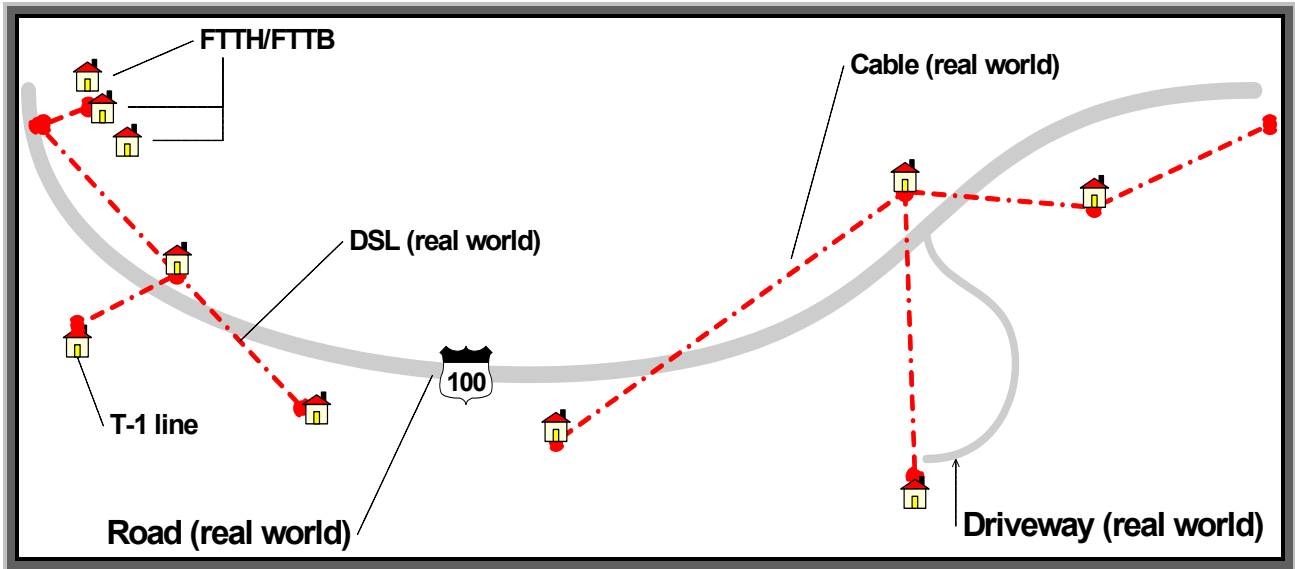


Figure 1

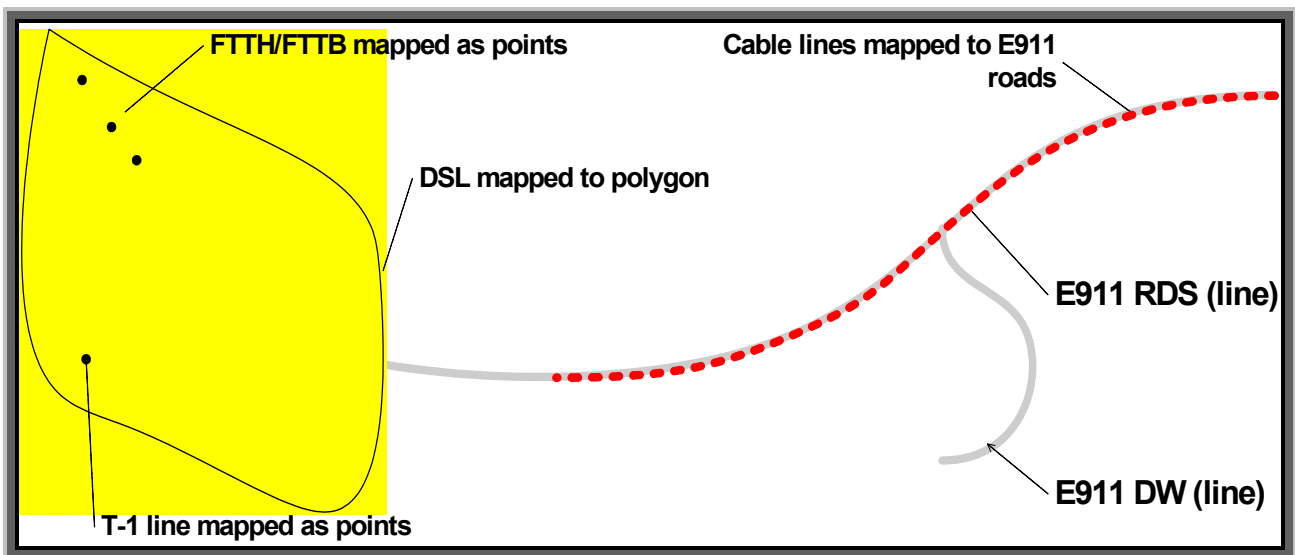


Figure 2

- ❑ **Fixed and Mobile Wireless (BB<mmy>_Wireless_poly and point):** Wireless broadband service that cannot be mapped to the street or address level, such as mobile/fixed wireless or satellite, will be mapped as service area polygons³ depicting the

³ In most cases fixed and mobile wireless coverage polygons will be generalized from detailed RF propagation rasters.

geographic coverage of each wireless service provider (BB<mmy>_Wireless_poly). It will identify the technology, spectrum, and speed available from each provider. Figure 3 provides an example of how wireless broadband coverage will be mapped. It should be noted that wireless tower and antenna locations will be loaded into the last-mile/middle-mile/backhaul infrastructure layer (see below). The data model will also support the storage of fixed wireless (WISP) availability data as address points (BB<mmy>_Wireless_point). It is anticipated that certain WISPs will be able to provide this information. The fixed wireless point layer will also support the mapping of wireless hotspots (Wi-Fi), however, this data isn't currently within the scope of the Vermont's Broadband Mapping Initiative.

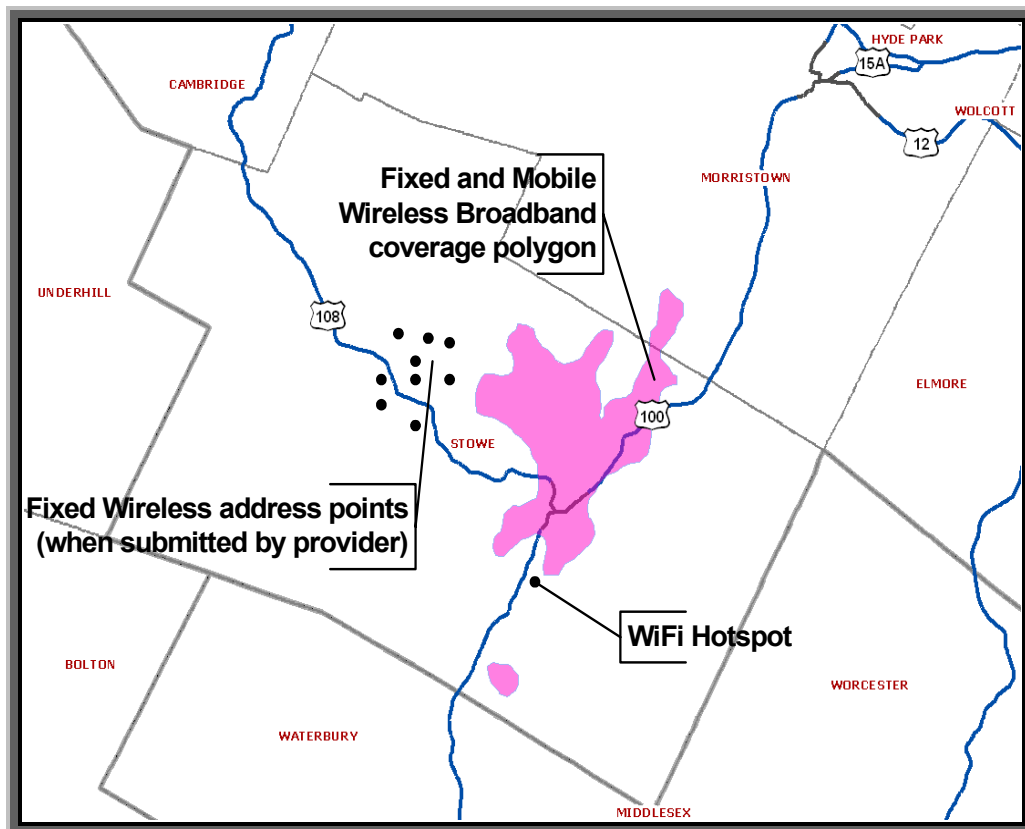


Figure 3

- **Last-mile, Middle-mile, and Backhaul Infrastructure (BB<mmy>_LastMidBackH_point):** The data model will support the identification of last-mile connection points (“first point of aggregation”) used by facilities-based broadband providers in Vermont. Examples of “first points of aggregation” include central offices and remote terminals locations, cable headend locations, and wireless tower (antenna) or base station locations. The data model will also support the identification of interconnection points of facilities in Vermont that provide connectivity between (a) a service provider’s network elements (or segments) or (b) between a service provider’s network and another provider’s network, including the Internet backbone

(collectively (a) and (b) are “middle-mile and backbone interconnection points”). The dataset will also include FTTP, FTTC, and FTTN locations. The last-mile, middle-mile, and backhaul information will be stored within a point feature class (BB<mmy>_LastMidBackH_point). The layer will identify the location (latitude/longitude), facility type (last-mile, middle-mile, backhaul), ownership status (owned vs leased), type of backhaul transport (e.g.: fiber, copper, wireless, etc.), transmission technology (aDSL, cable DOCSIS, etc.), upstream capacity (last-mile facilities only), interconnection point data rate (middle-mile and backhaul facilities only), number of end-users served (last-mile facilities only), and elevation above grade (towers/antennae). Figures 4 and 5 depict the relationship between the “real world” and “model world”.

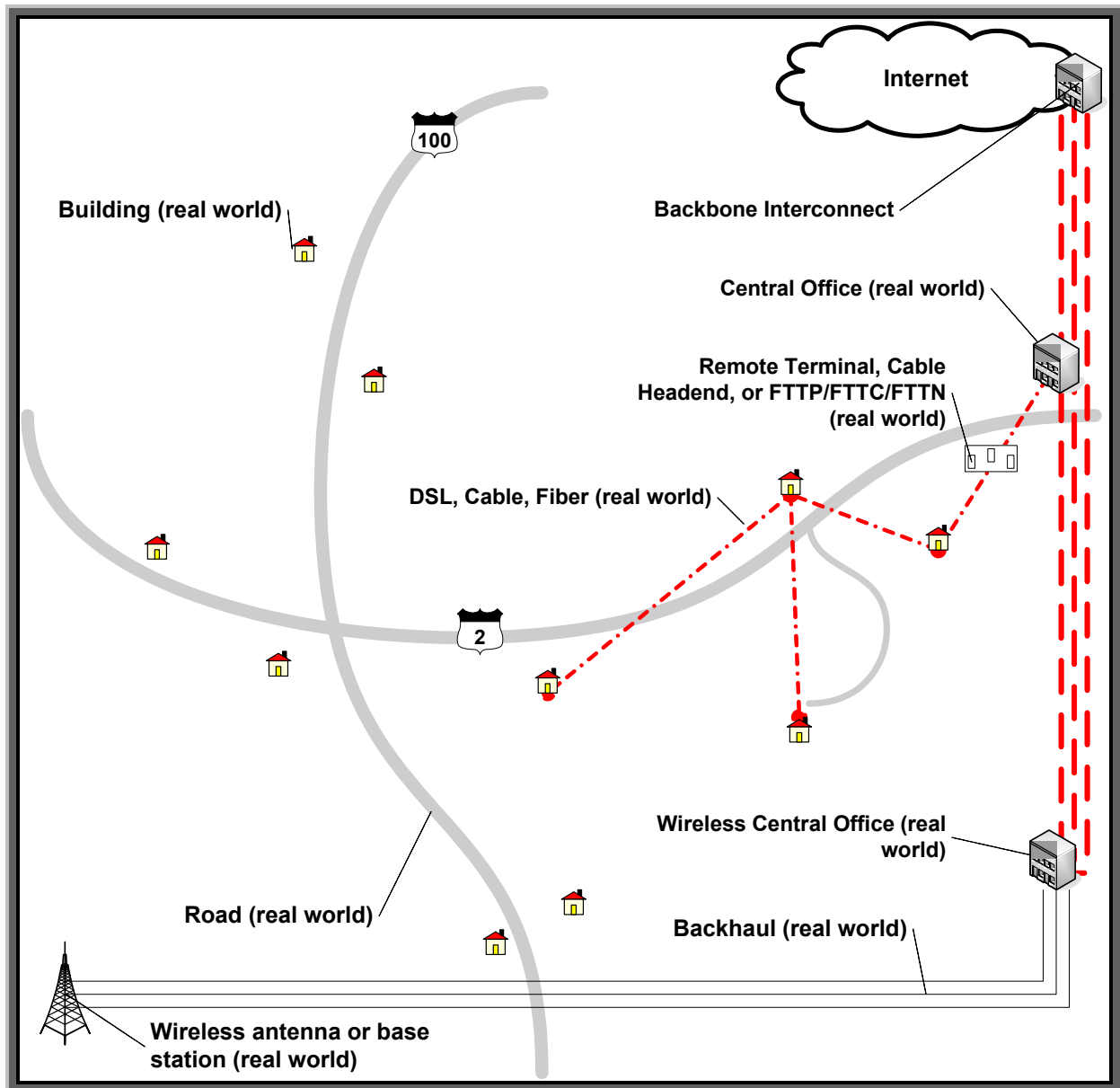


Figure 4

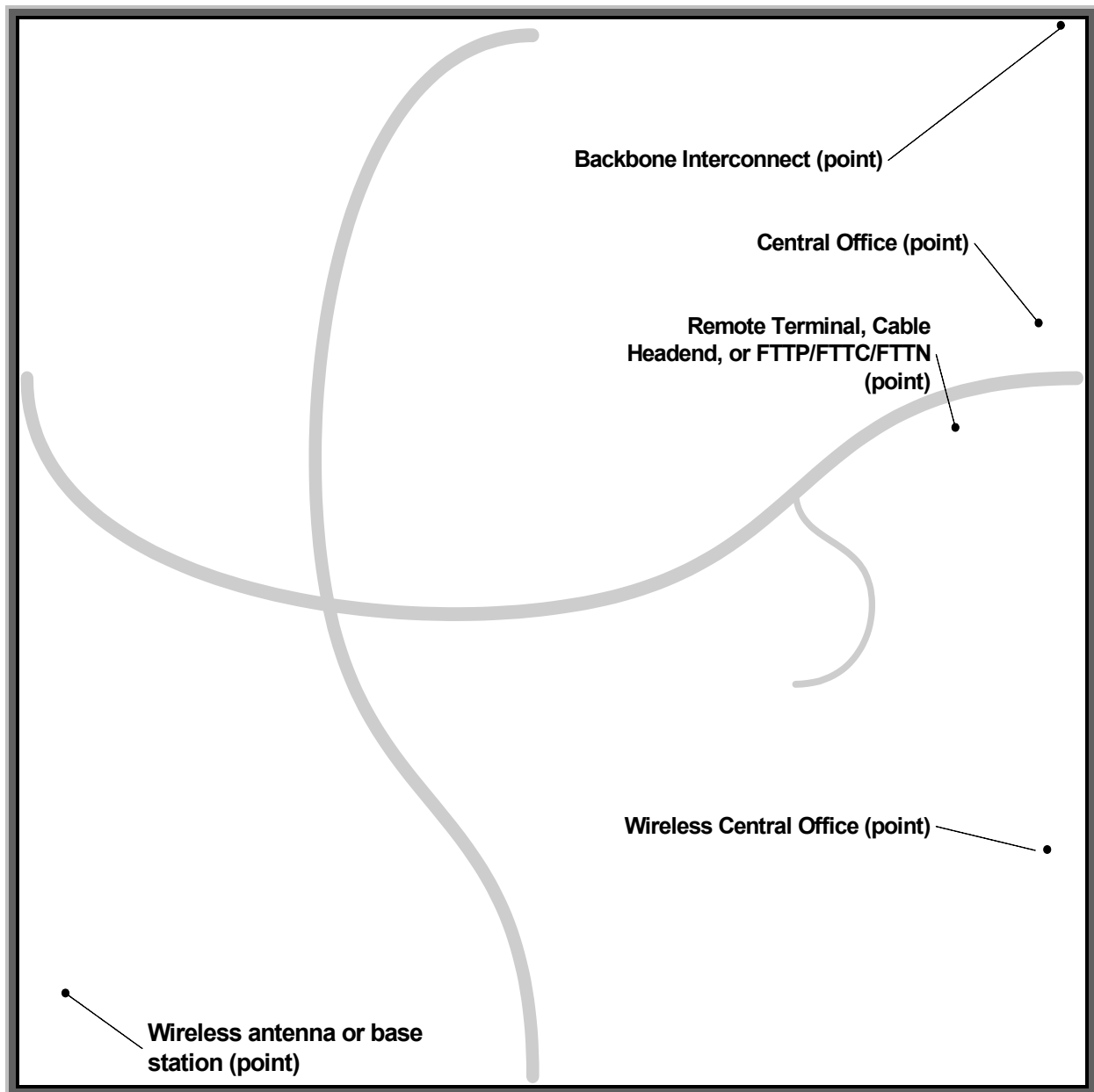


Figure 5

Other Data Model Elements

The Broadband Data Model will include additional elements necessary to support specific NTIA data requirements. These are outlined in detail below.

- **Community Anchor Institutions (BB<my>_Anchor_point)**: The data model will support the identification of “community anchor institutions” in Vermont. These include schools, libraries, medical and healthcare providers, public safety entities, community colleges and other institutions of higher education, and other community support organizations. This information will be stored within a point feature class

(BB<mmy>_Anchor_point). The layer will identify the location (latitude/longitude), address, type of institution, broadband subscription status, broadband transmission technology, and advertised download and upload speeds. Refer to BB_Output_Anchor below for NTIA submission schema.

- ❑ **Subscriber Weighted Nominal Speed by MSA/RSA (BB<mmy>_SpeedMSARSA):** The data model will include a table (BB<mmy>_SpeedMSARSA) allowing for the storage of nominal speed, subscriber weighted nominal speed, and typical speed by MSA/RSA as defined in the NTIA NOFA. Average Revenue per End-User (ARPU) will not be collected or stored in this table.
- ❑ **Schema for Address-level Data Submissions (BB<mmy>_Output_Addresses):** The data model will include a table (BB<mmy>_Output_Addresses) schema for reporting address-level broadband data to the NTIA. The Vermont Broadband Mapping Initiative will utilize this table schema when submitting address-level availability information for DSL, cable, fiber, and other copper wireline broadband services.
- ❑ **Schema for Street-level Data Submission (BB<mmy>_Output_Streets):** The DSL, cable broadband, optical fiber, and other copper-wire data will be “conflated” to Vermont’s high-accuracy Enhanced 911 road centerline layer in order to support the submission of data at the street-level to the NTIA.
- ❑ **Schema for Block-level Data Submission (BB<mmy>_Output_Blocks):** The DSL, cable broadband, optical fiber, and other copper-wire data will be “conflated” to Census Block polygons in order to support the submission of data at the Census Block-level to the NTIA.
- ❑ **Schema for Anchor Institution Data Submission (BB<mmy>_Output_Anchor):** The data model will include a table (BB<mmy>_Output_Anchor) schema for reporting Anchor Institution data to the NTIA.
- ❑ **Online Feedback Data at Address-level (BB<mmy>_Feedback):** Vermont’s Mapping Initiative will develop online feedback tools which will allow the public (and providers) to provide feedback at the address-level. The data model will include a table (BB<mmy>_Feedback) for this information. The table will include the E911 address and town, and E911 ESITE identifier (when available). It will also include the feedback information as well as the source of the feedback (public vs provider, etc.).

Coordinate System

The NTIA requires that all broadband map data be submitted in the WGS84 Geographic coordinate system. Vermont typically uses the Vermont State Plane coordinate system (NAD83 meters), and therefore will use this coordinate system for the BB Data Model. NTIA deliverables will be converted to WGS84 Geographic as needed.

Appendix A – Data Model Details

Summary of Data Model Object Classes

ObjectClass Name	Type	Geometry	Description
BB<mmyy>_DSL_poly	Feature Class	Polygon	DSL coverage polygons
BB<mmyy>_DSL_point	Feature Class	Point	DSL coverage represented as address points where DSL is available
BB<mmyy>_Cable_line	Feature Class	Line	Cable lines mapped to roads
BB<mmyy>_Fiber_point	Feature Class	Point	Fiber optic (FTTH/FTTB) points of service (address points)
BB<mmyy>_Fiber_poly	Feature Class	Polygon	Fiber optic (FTTH/FTTB) coverage area as a polygon
BB<mmyy>_OtherWireline_point	Feature Class	Point	Other copper wireline (ex: T-1) points of service (address points)
BB<mmyy>_Wireless_poly	Feature Class	Polygon	Fixed or mobile wireless and satellite coverage polygons.
BB<mmyy>_Wireless_point	Feature Class	Point	Fixed wireless address points and/or WiFi hotspots.
BB<mmyy>_LastMidBackH_point	Feature Class	Point	Last-mile, middle-mile, and backhaul infrastructure points. May include FTTP, FTTC, and FTTN locations.
BB<mmyy>_Anchor_point	Feature Class	Point	Community Anchor Institution points
BB<mmyy>_SpeedByMSARSA	Table	NA	Table used to store and report subscriber weighted nominal speed, nominal speed, and typical speed by MSA/RSA as defined in the NTIA NOFA.

BB<mmyy>_Output_Addresses	Feature Class	Point	A point feature class will be used when submitting address-level availability information for DSL, cable, fiber, and other copper wireline broadband services information to the NTIA. This feature class will be used to generate the “address_availability_VT.txt” file as specified in the NTIA NOFA.
BB<mmyy>_Output_Streets	Feature Class	Line	A line feature class will be used when submitting street-level availability information for DSL, cable, fiber, and other copper wireline broadband services information to the NTIA.
BB<mmyy>_Output_Blocks	Feature Class	Polygon	A polygon feature class will be used when submitting Census Block-level availability information for DSL, cable, fiber, and other copper wireline broadband services information to the NTIA.
BB<mmyy>_Feedback	Table	NA	Table used to store online feedback information.

Detailed Geodatabase Schema Report

Schema - Version 4c

VTBB DataModel v4c

ArcGIS Diagrammer

Report Creation

Date: Tuesday, April 06, 2010
Author: steves/VCGI on VCGI8

System Information

Operating System: Microsoft Windows NT 5.1.2600 Service Pack 3
.Net Framework: 2.0.50727.3603
Diagrammer: 1.0.3526.28981

Geodatabase

Workspace Type: File Geodatabase
File: H:\prj\ntia_broadband\data\datamodel\VTBB_DATAMODEL_V4C.XML

Table Of Contents

[Domains](#)

Listing of Coded Value and Range Domains.

[ObjectClasses](#)

Listing of Tables and FeatureClasses.

[Spatial Reference](#)

Listing of Spatial References used by FeatureClasses and FeatureDatasets.

[Back to Top](#)

Domains

Domain Name	Owner	Domain Type
BB Anchor Facility Descriptions		Coded Value
BB Community Anchor Institution Category Codes		Coded Value

BB Data Sources	Coded Value
BB Download Speed Tier Code	Coded Value
BB E911 Town Names	Coded Value
BB End User Codes	Coded Value
BB External Data Sources	Coded Value
BB Lastmile Middlemile Backhaul	Coded Value
BB MSA RSA	Coded Value
BB Owned or Leased	Coded Value
BB Polygon Type	Coded Value
BB Provider Names and DBA and FRN	Coded Value
BB Serving Facility Backhaul Data Rates	Coded Value
BB Serving Facility Interconnection Data Rates	Coded Value
BB Serving Facility Type	Coded Value
BB Source Organization	Coded Value
BB Spectrum Used	Coded Value
BB Technology of Transmission Codes	Coded Value
BB Update Action	Coded Value
BB Update User	Coded Value
BB Upload Speed Tier Code	Coded Value
BB Wireless Point Type	Coded Value
BB Yes No	Coded Value
BB Yes No Unknown	Coded Value

[Back to Top](#)

BB_Anchor_Facility_Descriptions

Owner	
Description	BB_Anchor_Facility_Descriptions
Domain Type	Coded Value
Field Type	String
Merge Policy	Default Value
Split Policy	Default Value
Domain Members	
Name	Value
City / Town Hall	City / Town Hall

City / Town Office	City / Town Office
College / University	College / University
EMS Station	EMS Station
Education Facility	Education Facility
Fire Station	Fire Station
Hospital / Medical Center	Hospital / Medical Center
Law Enforcement	Law Enforcement
Library	Library
Nursing Home / Long Term Care	Nursing Home / Long Term Care
Outpatient Clinic	Outpatient Clinic

[Back to Top](#)

BB_Community_Anchor_Institution_Category_Codes

Owner	
Description	BB_Community_Anchor_Institution_Category_Codes
Domain Type	Coded Value
Field Type	Small Integer
Merge Policy	Default Value
Split Policy	Default Value

Domain Members

Name	Value
School - K through 12	1
Library	2
Medical/healthcare	3
Public safety	4
University, college, other post-secondary	5
Other community support - government	6
Other community support - nongovernmental	7

[Back to Top](#)

BB_Data_Sources

Owner	
Description	BB_Data_Sources
Domain Type	Coded Value
Field Type	Integer
Merge Policy	Default Value
Split Policy	Default Value
Domain Members	
Name	Value
Digital - Mapped to roads	1
Digital - Actual landlines	2
Digital - Wireless propagation analysis	3
Digital - Wireless polygon estimate	4
Digital - Wireless polygons where subscribers have wireless broadband service 95 percent of the time to within 50 feet of the polygon boundary	5
Digital - Polygons all residential, business, and institutional locations have access to the service	6
Digital - Addresses	7
Paper map	8
1:5000 VT orthophoto	9
GPS field collection	10
Phone Survey	11
Online Survey	12
Online Feedback	13
Phone Survey	14
Online Survey	15
Online Feedback	16
BB_CABLE2008_line	50
DSL2008 feature dataset (DPS_GDB2008_Master FGDB)	51
WISP2008 feature dataset (DPS_GDB2008_Master FGDB)	52
Utility_CELLBB2008_poly feature class (DPS_GDB2008_Master FGDB)	53
VT Critical Facilities Database	54

IMLS Public Library Survey	55
E911 road centerline data	56
E911 address point (ESITE) data	57
Misc digital data sources	8888
Unknown	9999
BB0609_Cable_Stowe	58
BB0609_DSL_Smuggs	59
BB0609_Fiber_Smuggs	60
BB0609_SpeedByMSARSA	61

[Back to Top](#)

BB_Download_Speed_Tier_Code

Owner	
Description	BB_Download_Speed_Tier_Code
Domain Type	Coded Value
Field Type	Small Integer
Merge Policy	Default Value
Split Policy	Default Value

Domain Members	
Name	Value
Less than or equal to 200 kbps	1
Greater than 200 kbps and less than 768 kbps	2
Greater than or equal to 768 kbps and less than 1.5 mbps	3
Greater than or equal to 1.5 mbps and less than 3 mbps	4
Greater than or equal to 3 mbps and less than 6 mbps	5
Greater than or equal to 6 mbps and less than 10 mbps	6
Greater than or equal to 10 mbps and less than 25 mbps	7
Greater than or equal to 25 mbps and less than 50 mbps	8
Greater than or equal to 50 mbps	9

and less than 100 mbps	
Greater than or equal to 100 mbps	10
and less than 1 gbps	
Greater than or equal to 1 gbps	11
Unknown	99
Not Applicable	-99

[Back to Top](#)

BB_E911_Town_Names

Owner	
Description	BB_E911_Town_Names
Domain Type	Coded Value
Field Type	String
Merge Policy	Default Value
Split Policy	Default Value

Domain Members

Name	Value
ADDISON	ADDISON
ALBANY	ALBANY
ALBURGH	ALBURGH
ANDOVER	ANDOVER
ARLINGTON	ARLINGTON
ATHENS	ATHENS
AVERILL	AVERILL
AVERY'S GORE	AVERY'S GORE
BAKERSFIELD	BAKERSFIELD
BALTIMORE	BALTIMORE
BARNARD	BARNARD
BARNET	BARNET
BARRE CITY	BARRE CITY
BARRE TOWN	BARRE TOWN
BARTON	BARTON
BELLOWS FALLS	BELLOWS FALLS
BELVIDERE	BELVIDERE
BENNINGTON	BENNINGTON
BENSON	BENSON

BERKSHIRE	BERKSHIRE
BERLIN	BERLIN
BETHEL	BETHEL
BLOOMFIELD	BLOOMFIELD
BOLTON	BOLTON
BRADFORD	BRADFORD
BRAINTREE	BRAINTREE
BRANDON	BRANDON
BRATTLEBORO	BRATTLEBORO
BRIDGEWATER	BRIDGEWATER
BRIDPORT	BRIDPORT
BRIGHTON	BRIGHTON
BRISTOL	BRISTOL
BROOKFIELD	BROOKFIELD
BROOKLINE	BROOKLINE
BROWNINGTON	BROWNINGTON
BRUNSWICK	BRUNSWICK
BUEL'S GORE	BUEL'S GORE
BUELS GORE	BUELS GORE
BURKE	BURKE
BURLINGTON	BURLINGTON
CABOT	CABOT
CALAIS	CALAIS
CAMBRIDGE	CAMBRIDGE
CANAAN	CANAAN
CASTLETON	CASTLETON
CAVENDISH	CAVENDISH
CHARLESTON	CHARLESTON
CHARLOTTE	CHARLOTTE
CHELSEA	CHELSEA
CHESTER	CHESTER
CHITTENDEN	CHITTENDEN
CLARENDON	CLARENDON
COLCHESTER	COLCHESTER
CONCORD	CONCORD
CORINTH	CORINTH
CORNWALL	CORNWALL
COVENTRY	COVENTRY
CRAFTSBURY	CRAFTSBURY

DANBY	DANBY
DANVILLE	DANVILLE
DERBY	DERBY
DORSET	DORSET
DOVER	DOVER
DUMMERSTON	DUMMERSTON
DUXBURY	DUXBURY
EAST HAVEN	EAST HAVEN
EAST MONTPELIER	EAST MONTPELIER
EDEN	EDEN
ELMORE	ELMORE
ENOSBURG	ENOSBURG
ESSEX JUNCTION VILLAGE	ESSEX JUNCTION VILLAGE
ESSEX TOWN	ESSEX TOWN
FAIR HAVEN	FAIR HAVEN
FAIRFAX	FAIRFAX
FAIRFIELD	FAIRFIELD
FAIRLEE	FAIRLEE
FAYSTON	FAYSTON
FERDINAND	FERDINAND
FERRISBURG	FERRISBURG
FERRISBURGH	FERRISBURGH
FLETCHER	FLETCHER
FRANKLIN	FRANKLIN
GEORGIA	GEORGIA
GLASTENBURY	GLASTENBURY
GLOVER	GLOVER
GOSHEN	GOSHEN
GRAFTON	GRAFTON
GRANBY	GRANBY
GRAND ISLE	GRAND ISLE
GRANVILLE	GRANVILLE
GREENSBORO	GREENSBORO
GROTON	GROTON
GUILDHALL	GUILDHALL
GUILFORD	GUILFORD
HALIFAX	HALIFAX
HANCOCK	HANCOCK
HARDWICK	HARDWICK

HARTFORD	HARTFORD
HARTLAND	HARTLAND
HIGHGATE	HIGHGATE
HINESBURG	HINESBURG
HOLLAND	HOLLAND
HUBBARDTON	HUBBARDTON
HUNTINGTON	HUNTINGTON
HYDE PARK	HYDE PARK
IRA	IRA
IRASBURG	IRASBURG
ISLE LA MOTTE	ISLE LA MOTTE
JAMAICA	JAMAICA
JAY	JAY
JERICHO	JERICHO
JOHNSON	JOHNSON
KILLINGTON	KILLINGTON
KIRBY	KIRBY
LANDGROVE	LANDGROVE
LEICESTER	LEICESTER
LEMINGTON	LEMINGTON
LEWIS	LEWIS
LINCOLN	LINCOLN
LONDONDERRY	LONDONDERRY
LOWELL	LOWELL
LUDLOW	LUDLOW
LUNENBURG	LUNENBURG
LYNDON	LYNDON
MAIDSTONE	MAIDSTONE
MANCHESTER	MANCHESTER
MARLBORO	MARLBORO
MARSHFIELD	MARSHFIELD
MENDON	MENDON
MIDDLEBURY	MIDDLEBURY
MIDDLESEX	MIDDLESEX
MIDDLETOWN SPRINGS	MIDDLETOWN SPRINGS
MILTON	MILTON
MONKTON	MONKTON
MONTGOMERY	MONTGOMERY
MONTPELIER	MONTPELIER

MORETOWN	MORETOWN
MORGAN	MORGAN
MORRISTOWN	MORRISTOWN
MOUNT HOLLY	MOUNT HOLLY
MOUNT TABOR	MOUNT TABOR
NEW HAVEN	NEW HAVEN
NEWARK	NEWARK
NEWBURY	NEWBURY
NEWFANE	NEWFANE
NEWPORT CITY	NEWPORT CITY
NEWPORT TOWN	NEWPORT TOWN
NORTH BENNINGTON	NORTH BENNINGTON
NORTH HERO	NORTH HERO
NORTHFIELD	NORTHFIELD
NORTON	NORTON
NORWICH	NORWICH
ORANGE	ORANGE
ORLEANS	ORLEANS
ORWELL	ORWELL
PANTON	PANTON
PAWLET	PAWLET
PEACHAM	PEACHAM
PERU	PERU
PITTSFIELD	PITTSFIELD
PITTSFORD	PITTSFORD
PLAINFIELD	PLAINFIELD
PLYMOUTH	PLYMOUTH
POMFRET	POMFRET
POULTNEY	POULTNEY
POWNAL	POWNAL
PROCTOR	PROCTOR
PUTNEY	PUTNEY
RANDOLPH	RANDOLPH
READING	READING
READSBORO	READSBORO
RICHFORD	RICHFORD
RICHMOND	RICHMOND
RIPTON	RIPTON
ROCHESTER	ROCHESTER

ROCKINGHAM	ROCKINGHAM
ROXBURY	ROXBURY
ROYALTON	ROYALTON
RUPERT	RUPERT
RUTLAND CITY	RUTLAND CITY
RUTLAND TOWN	RUTLAND TOWN
RYEGATE	RYEGATE
SAINT ALBANS CITY	SAINT ALBANS CITY
SAINT ALBANS TOWN	SAINT ALBANS TOWN
SAINT GEORGE	SAINT GEORGE
SAINT JOHNSBURY	SAINT JOHNSBURY
SALISBURY	SALISBURY
SANDGATE	SANDGATE
SAXTONS RIVER	SAXTONS RIVER
SEARSBURG	SEARSBURG
SHAFTSBURY	SHAFTSBURY
SHARON	SHARON
SHEFFIELD	SHEFFIELD
SHELBURNE	SHELBURNE
SHELDON	SHELDON
SHOREHAM	SHOREHAM
SHREWSBURY	SHREWSBURY
SOMERSET	SOMERSET
SOUTH BURLINGTON	SOUTH BURLINGTON
SOUTH HERO	SOUTH HERO
SPRINGFIELD	SPRINGFIELD
STAMFORD	STAMFORD
STANNARD	STANNARD
STARKSBORO	STARKSBORO
STOCKBRIDGE	STOCKBRIDGE
STOWE	STOWE
STRAFFORD	STRAFFORD
STRATTON	STRATTON
SUDBURY	SUDBURY
SUNDERLAND	SUNDERLAND
SUTTON	SUTTON
SWANTON	SWANTON
THETFORD	THETFORD
TINMOUTH	TINMOUTH

TOPSHAM	TOPSHAM
TOWNSHEND	TOWNSHEND
TROY	TROY
TUNBRIDGE	TUNBRIDGE
UNDERHILL	UNDERHILL
VERGENNES	VERGENNES
VERNON	VERNON
VERSHIRE	VERSHIRE
VICTORY	VICTORY
WAITSFIELD	WAITSFIELD
WALDEN	WALDEN
WALLINGFORD	WALLINGFORD
WALTHAM	WALTHAM
WARDSBORO	WARDSBORO
WARNER'S GRANT	WARNER'S GRANT
WARREN	WARREN
WARREN'S GORE	WARREN'S GORE
WASHINGTON	WASHINGTON
WATERBURY	WATERBURY
WATERFORD	WATERFORD
WATERVILLE	WATERVILLE
WEATHERSFIELD	WEATHERSFIELD
WELLS	WELLS
WEST FAIRLEE	WEST FAIRLEE
WEST HAVEN	WEST HAVEN
WEST PAWLET	WEST PAWLET
WEST RUTLAND	WEST RUTLAND
WEST WINDSOR	WEST WINDSOR
WESTFIELD	WESTFIELD
WESTFORD	WESTFORD
WESTMINSTER	WESTMINSTER
WESTMORE	WESTMORE
WESTON	WESTON
WEYBRIDGE	WEYBRIDGE
WHEELOCK	WHEELOCK
WHITING	WHITING
WHITINGHAM	WHITINGHAM
WILLIAMSTOWN	WILLIAMSTOWN
WILLISTON	WILLISTON

WILMINGTON	WILMINGTON
WINDHAM	WINDHAM
WINDSOR	WINDSOR
WINHALL	WINHALL
WINOOSKI	WINOOSKI
WOLCOTT	WOLCOTT
WOODBURY	WOODBURY
WOODFORD	WOODFORD
WOODSTOCK	WOODSTOCK
WORCESTER	WORCESTER

[Back to Top](#)

BB_End_User_Codes

Owner	
Description	BB_End_User_Codes
Domain Type	Coded Value
Field Type	Small Integer
Merge Policy	Default Value
Split Policy	Default Value
Domain Members	
Name	Value
Residential	1
Governmental	2
Small Business	3
Medium or Large Enterprise	4
Other	5
Unknown	99

[Back to Top](#)

BB_External_Data_Sources

Owner	
Description	BB_External_Data_Sources
Domain Type	Coded Value
Field Type	Integer

Merge Policy	Default Value
Split Policy	Default Value
Domain Members	
Name	Value
VTRANS	1
Border Patrol	2
ANR Water Supply Division	3
VELCO	4
VCGI	5
E911	6
IMLS Public Library Survey	7
UVM CRS	8

[Back to Top](#)

BB_Lastmile_Middlemile_Backhaul

Owner	
Description	BB_Lastmile_Middlemile_Backhaul
Domain Type	Coded Value
Field Type	String
Merge Policy	Default Value
Split Policy	Default Value
Domain Members	
Name	Value
Lastmile	L
Middlemile	M
Backhaul	B
Unknown or Undefined	X

[Back to Top](#)

BB_MSA_RSA

Owner	
Description	BB_MSA_RSA
Domain Type	Coded Value
Field Type	String

Merge Policy	Default Value
Split Policy	Default Value
Domain Members	
Name	Value
MSA	MSA
RSA	RSA

[Back to Top](#)

BB_Owned_or_Leased

Owner	
Description	BB_Owned_or_Leased
Domain Type	Coded Value
Field Type	Small Integer
Merge Policy	Default Value
Split Policy	Default Value
Domain Members	
Name	Value
Owned	0
Leased	1
Unknown	99

[Back to Top](#)

BB_Polygon_Type

Owner	
Description	BB_Polygon_Type
Domain Type	Coded Value
Field Type	String
Merge Policy	Default Value
Split Policy	Default Value
Domain Members	
Name	Value
Exchange area polygon	EXCHANGE
Census Block polygon	CENSUS BLOCK
Buffer polygon	BUFFER

2 meter buffer around address points	2M BUFFER ADD PTS
154 meter buffer around address points	154M BUFFER ADD PTS
30ft buffer around address points	30FT BUFFER ADD PTS
500ft buffer E911RDS	500FT BUFFER E911RDS
Other	OTHER

[Back to Top](#)

BB_Provider_Names_and_DBA_and_FRN

Owner	
Description	BB_Provider_Names_and_DBA_and_FRN
Domain Type	Coded Value
Field Type	Small Integer
Merge Policy	Default Value
Split Policy	Default Value

Domain Members

Name	Value
APC Services/Got2Web	1
AT&T Mobility	2
Burlington Telecom	3
Cloud Alliance	5
Comcast	6
Duncan Cable	7
Fairpoint Communications	8
Fairpoint Vermont	52
Finowen	53
Franklin Telephone Company, Inc.	11
GlobalNet	12
Great Auk Wireless, LLC	13
Green Mountain Access	10
Hughes Network Systems LLC	14
Jeffersonville Cable TV	54
Kingdom Connection	15
Level 3 Communications	16
NCIC	17

Broadband Data Model
VT Broadband Mapping Initiative



North Branch Networks	18
North Country Communications	55
Nowirz	19
One Communications	20
Powershift	21
RCN Metro NEON Communications	22
SegTel	23
Shorham Telephone Company	24
Smuggler's Notch Water Company	25
Southern Vermont Broadband Cooperative	29
Southern Vermont Cable Company	26
Sovernet Communications	27
Sprint Nextel	28
Starband	30
Stowe Cablevision	31
TDS Telecommunications Corp.	32
TelJet	33
Charter Communications	4
T-Mobile	34
Topsham Telephone Company	35
Trans-Video Cable	36
Velco	38
Verizon Business	39
Verizon Wireless	40
U.S. Cellular	37
Vermont Telephone Company	41
WaveComm	43
White Mountain Cable	44
WildBlue Communications	45
WirelessVT Solutions	46
NO BROADBAND PROVIDER	-99

[Back to Top](#)

BB_Serving_Facility_Backhaul_Data_Rates

Owner

Description	BB_Serving_Facility_Backhaul_Data_Rates
Domain Type	Coded Value
Field Type	Small Integer
Merge Policy	Default Value
Split Policy	Default Value
Domain Members	
Name	Value
Less than 1.5 mbps	1
Greater than or equal to 1.5 mbps and less than 3 mbps	2
Greater than or equal to 3 mbps and less than 6 mbps	3
Greater than or equal to 6 mbps and less than 10 mbps	4
Greater than or equal to 10 mbps and less than 25 mbps	5
Greater than or equal to 25 mbps and less than 50 mbps	6
Greater than or equal to 50 mbps and less than 100 mbps	7
Greater than or equal to 100 mbps and less than 1 gbps	8
Greater than or equal to 1 gbps	9
Unknown	99

[Back to Top](#)

BB_Serving_Facility_Interconnection_Data_Rates

Owner	
Description	BB_Serving_Facility_Interconnection_Data_Rates
Domain Type	Coded Value
Field Type	Small Integer
Merge Policy	Default Value
Split Policy	Default Value
Domain Members	
Name	Value
Multiple T1s and less than 40 mbps	1

Broadband Data Model
VT Broadband Mapping Initiative



Greater than 40 mbps and less than 150 mbps	2
Greater than 150 mbps and less than 600 mbps	3
Greater than or equal to 600 mbps and less than 2.4 gbps	4
Greater than or equal to 2.4 gbps and less than 10 gbps	5
Greater than or equal to 10 gbps	6
Unknown	99

[Back to Top](#)

BB_Serving_Facility_Type

Owner	
Description	BB_Serving_Facility_Type
Domain Type	Coded Value
Field Type	Small Integer
Merge Policy	Default Value
Split Policy	Default Value

Domain Members

Name	Value
Fiber	1
Copper	2
Hybrid Fiber Coax (HFC)	3
Wireless	4
Unknown	99

[Back to Top](#)

BB_Source_Organization

Owner	
Description	BB_Source_Organization
Domain Type	Coded Value
Field Type	Small Integer
Merge Policy	Default Value

Split Policy	Default Value
Domain Members	
Name	Value
Broadband Provider	1
VT Dept of Public Service	2
VCGI	3
FCC	4
Institute of Museum and Library Services	5
Contractor	6
UVM CRS	7
Other	8
Unknown	99

[Back to Top](#)

BB_Spectrum_Used

Owner	
Description	BB_Spectrum_Used
Domain Type	Coded Value
Field Type	Small Integer
Merge Policy	Default Value
Split Policy	Default Value
Domain Members	
Name	Value
Cellular spectrum (824-849 MHz; 862-869) used to provide service	1
700 MHz spectrum (698-758 MHz; 775-788 MHz; 805-806 MHz) used to provide service	2
Broadband Personal Communications Services spectrum (1850-1915 MHz; 1930-1995) used to provide service	3
Advanced Wireless Services spectrum (1710-1755 MHz; 2100-2155) used to provide service	4

Broadband Radio	
Service/Educational Broadband Service spectrum (2496-2690 MHz) used to provide service	5
Unlicensed (including broadcast television white spaces) spectrum used to provide service	6
Specialized Mobile Radio Service (SMR) (817-824 MHz; 862-869 MHz; 896-901 MHz; 935-940 MHz)	7
Wireless Communications Service (WCS) spectrum (2305-2320 MHz; 2345-2360 MHz), 3650-3700 MHz	8
Satellite (L-band, Big LEO, Little LEO, 2 GHz)	9
Unknown	99

[Back to Top](#)

BB_Technology_of_Transmission_Codes

Owner	
Description	BB_Technology_of_Transmission_Codes
Domain Type	Coded Value
Field Type	Small Integer
Merge Policy	Default Value
Split Policy	Default Value
Domain Members	
Name	Value
Asymmetric xDSL	10
Symmetric xDSL	20
Other Copper Wireline	30
Cable Modem - DOCSIS 3.0	40
Cable Modem - Other	41
Cable TV only - No Broadband	42
Optical Carrier/Fiber to the End User	50
Satellite	60
Terrestrial Fixed Wireless -	70

Unlicensed	
Terrestrial Fixed Wireless - Licensed	71
Terrestrial Mobile Wireless	80
Electric Power Line	90
All Other	0
Unknown	99
Not Applicable	-99

[Back to Top](#)

BB_Update_Action

Owner	
Description	BB_Update_Action
Domain Type	Coded Value
Field Type	String
Merge Policy	Default Value
Split Policy	Default Value
Domain Members	
Name	Value
Split	S
Add	A
Unsplit	U
Move	M
Moved to E911 ESITE location	M1
Change/Update attributes	C
Delete	D

[Back to Top](#)

BB_Update_User

Owner	
Description	BB_Update_User
Domain Type	Coded Value
Field Type	String
Merge Policy	Default Value
Split Policy	Default Value

Domain Members

Name	Value
VCGI GIS Technician	VCGI Tech
DPS GIS Technician	DPS Tech
VCGI Administrator	VCGI Admin
CRS Technician	CRS Tech
CRS Administrator	CRS Admin

[Back to Top](#)

BB_Upload_Speed_Tier_Code

Owner	BB_Upload_Speed_Tier_Code
Description	BB_Upload_Speed_Tier_Code
Domain Type	Coded Value
Field Type	Small Integer
Merge Policy	Default Value
Split Policy	Default Value

Domain Members

Name	Value
Less than or equal to 200 kbps	1
Greater than 200 kbps and less than 768 kbps	2
Greater than or equal to 768 kbps and less than 1.5 mbps	3
Greater than or equal to 1.5 mbps and less than 3 mbps	4
Greater than or equal to 3 mbps and less than 6 mbps	5
Greater than or equal to 6 mbps and less than 10 mbps	6
Greater than or equal to 10 mbps and less than 25 mbps	7
Greater than or equal to 25 mbps and less than 50 mbps	8
Greater than or equal to 50 mbps and less than 100 mbps	9
Greater than or equal to 100 mbps	10

and less than 1 gbps	
Greater than or equal to 1 gbps	11
Unknown	99
Not Applicable	-99

[Back to Top](#)

BB_Wireless_Point_Type

Owner	
Description	BB_Wireless_Point_Type
Domain Type	Coded Value
Field Type	Small Integer
Merge Policy	Default Value
Split Policy	Default Value
Domain Members	
Name	Value
WISP Address Point - Verified	1
WISP Address Point - Unverified	2
WiFi Hotspot - public network	3
WiFi Hotspot - private network	4

[Back to Top](#)

BB_Yes_No

Owner	
Description	BB_Yes_No
Domain Type	Coded Value
Field Type	String
Merge Policy	Default Value
Split Policy	Default Value
Domain Members	
Name	Value
Yes	Y
No	N

[Back to Top](#)

BB_Yes_No_Unknown

Owner
Description BB_Yes_No_Unknown
Domain Type Coded Value
Field Type String
Merge Policy Default Value
Split Policy Default Value

Domain Members

Name	Value
Yes	Y
No	N
Unknown	U

[Back to Top](#)

ObjectClasses

ObjectClass Name	Type	Geometry	Subtype
Stand Alone ObjectClass(s)			
BBmmyy Anchor_point	Simple FeatureClass	Point	- SR
BBmmyy Cable_line	Simple FeatureClass	Polyline	- SR
BBmmyy Cable_poly	Simple FeatureClass	Polygon	- SR
BBmmyy DSL_point	Simple FeatureClass	Point	- SR
BBmmyy DSL_poly	Simple FeatureClass	Polygon	- SR
BBmmyy Feedback	Table	-	-
BBmmyy Fiber_point	Simple FeatureClass	Point	- SR
BBmmyy Fiber_poly	Simple FeatureClass	Polygon	- SR
BBmmyy LastMidBackH_point	Simple FeatureClass	Point	- SR
BBmmyy OtherWireline_point	Simple FeatureClass	Point	- SR
BBmmyy Output_Addresses	Simple FeatureClass	Point	- SR
BBmmyy Output_Anchor	Simple FeatureClass	Point	- SR
BBmmyy Output_Blocks	Simple FeatureClass	Polygon	- SR
BBmmyy Output_Streets	Simple FeatureClass	Polyline	- SR
BBmmyy SpeedByMSARSA	Table	-	-

BBmmy_Wireless_point	Simple	FeatureClass	Point	-	SR
BBmmy_Wireless_poly	Simple	FeatureClass	Polygon	-	SR

[Back to Top](#)

BBmmy_Anchor_point

Alias	BBmmy_Anchor_point		Geometry: Point
Dataset Type	FeatureClass		Average Number of Points: 0
FeatureType	Simple		Has M: No Has Z: No Grid Size: 4566.5293673898086
Field Name	Alias Name	Model Name	Type Precn. Scale Length Null
OBJECTID	OBJECTID	OBJECTID	OID 0 0 4 No
SHAPE	SHAPE	SHAPE	Geometry 0 0 0 Yes
AnchorID	Anchor_Facility_ID	AnchorID	Integer 0 0 4 Yes
Name			String 0 0 100 Yes
Latitude			Single 0 0 4 Yes
Longitude			Single 0 0 4 Yes
Category	Category_of_Facility	Category	Small Integer 0 0 2 Yes
FacDesc	Facility_Desc	FacDesc	String 0 0 255 Yes
Broadband	Broadband_Service	Broadband_Service	String 0 0 1 Yes
TransTech	Technology_of_Transmission	Technology_of_Transmission	Small Integer 0 0 2 Yes
AdDwnSpeed	Advertised_Down_Stream_Service_Speed	Advertised_Down_Stream_Service_Speed	Small Integer 0 0 2 Yes
AdUpSpeed	Advertised_Upstream_Service_Speed	Advertised_Upstream_Service_Speed	Small Integer 0 0 2 Yes
FacE911Add	E911_Address	FacE911Add	String 0 0 255 Yes
FacESITEID	E911_ESITE_ID	FacESITEID	Integer 0 0 4 Yes
FacTown	Facility_E911_Town	FacTown	String 0 0 50 Yes
MailTown	Facility_Mail_Town	MailTown	String 0 0 100 Yes
FacState			String 0 0 2 Yes
FacPhone			String 0 0 30 Yes
FacZip	Facility_Zipcode	FacZip	String 0 0 5 Yes
FacZip4	Facility_ZipPlus4	FacZip4	String 0 0 4 Yes
PocName	PointofContact_Name	PocName	String 0 0 100 Yes
PocPhone	PointofContact_Phone	PocPhone	String 0 0 30 Yes
PocEmail	PointofContact_Email	PocEmail	String 0 0 255 Yes
AttribSrc	Attribute_Source	AttribSrc	Integer 0 0 4 Yes
AttribOrg	Attribute_Org	AttribOrg	Small Integer 0 0 2 Yes
DataSrc	Data_Source	DataSrc	Integer 0 0 4 Yes
SrcOrg	Source_Organization	SrcOrg	Small Integer 0 0 2 Yes
UpdDate	Update_Date	UPDDATE	Date 0 0 8 Yes
UpdAct	Update_Action	UPDACT	String 0 0 2 Yes
UpdUser	Update_User	UPDUSER	String 0 0 20 Yes
UpdNotes	Update_Notes	UpdNotes	String 0 0 255 Yes
ExDataID	External_Data_ID	ExDataID	String 0 0 100 Yes

Broadband Data Model
VT Broadband Mapping Initiative



ExSource	External_Data_Source	ExSource	Integer	0	0	4	Yes
ExLoadDate	Date_External_Data_Loaded	ExLoadDate	Date	0	0	8	Yes
Subtype Name	Default Value		Domain				
ObjectClass							
Category				BB_Community_Anchor_Institution_Category_Codes			
Broadband				BB_Yes_No_Unknown			
TransTech				BB_Technology_of_Transmission_Codes			
AdDwnSpeed				BB_Download_Speed_Tier_Code			
AdUpSpeed				BB_Upload_Speed_Tier_Code			
FacTown				BB_E911_Town_Names			
AttribSrc				BB_Data_Sources			
AttribOrg				BB_Source_Organization			
DataSrc				BB_Data_Sources			
SrcOrg				BB_Source_Organization			
UpdAct				BB_Update_Action			
UpdUser				BB_Update_User			
ExSource				BB_External_Data_Sources			
Index Name	Ascending	Unique		Fields			
FDO_OBJECTID	Yes	Yes		OBJECTID			
FDO_SHAPE	No	No		SHAPE			

[Back to Top](#)

BBmmyy_Cable_line

Alias	BBmmyy_Cable_line	Geometry: Polyline				
Dataset Type	FeatureClass	Average Number of Points: 0				
FeatureType	Simple	Has M: No				
		Has Z: No				
		Grid Size: 1100				
Field Name	Alias Name	Model Name	Type	Precn.	Scale	LengthNull
OBJECTID	OBJECTID	OBJECTID	OID	0	0	4 No
SHAPE	SHAPE	SHAPE	Geometry	0	0	0 Yes
ProviderID	ProviderID	ProviderID	Small Integer	0	0	2 Yes
TransTech	Technology_of_Transmission	Technology_of_Transmission	Small Integer	0	0	2 Yes
MxAdDwnSpd	Maximum_Advertised_Downstream_Speed	Maximum_Advertised_Downstream_Speed	Small Integer	0	0	2 Yes
MxAdUpSpd	Maximum_Advertised_Upstream_Speed	Maximum_Advertised_Upstream_Speed	Small Integer	0	0	2 Yes
TypDwnSpd	Typical_Downstream_Speed	Typical_Downstream_Speed	Small Integer	0	0	2 Yes
TypUpSpd	Typical_Upstream_Speed	Typical_Upstream_Speed	Small Integer	0	0	2 Yes
E911_RDN	E911_RDS_RDNAME_NUM	E911_RDN	Integer	0	0	4 Yes
AttribSrc	Attribute_Source	AttribSrc	Integer	0	0	4 Yes
AttribOrg	Attribute_Org	AttribOrg	Small Integer	0	0	2 Yes
DataSrc	Data_Source	DataSrc	Integer	0	0	4 Yes
SrcOrg	Source_Organization	SrcOrg	Small Integer	0	0	2 Yes
UpdDate	Update_Date	UPDDATE	Date	0	0	8 Yes
UpdAct	Update_Action	UPDACT	String	0	0	2 Yes
UpdUser	Update_User	UPDUSER	String	0	0	20 Yes
UpdNotes	Update_Notes	UpdNotes	String	0	0	255 Yes
SHAPE_Length	SHAPE_Length	SHAPE_Length	Double	0	0	8 Yes

Broadband Data Model
VT Broadband Mapping Initiative



Subtype Name	Default Value	Domain
ObjectClass		
ProviderID		BB Provider Names and DBA and FRN
TransTech		BB Technology of Transmission Codes
MxAdDwnSpd		BB Download Speed Tier Code
MxAdUpSpd		BB Upload Speed Tier Code
TypDwnSpd		BB Download Speed Tier Code
TypUpSpd		BB Upload Speed Tier Code
AttribSrc		BB Data Sources
AttribOrg		BB Source Organization
DataSrc		BB Data Sources
SrcOrg		BB Source Organization
UpdAct		BB Update Action
UpdUser		BB Update User
Index Name	Ascending	Unique
FDO_OBJECTID	Yes	Yes
FDO_SHAPE	No	No
		Fields
		OBJECTID
		SHAPE

[Back to Top](#)

BBmmy_Cable_poly

Field Name	Alias Name	Model Name	Type	Precn.	Scale	Length	Null
OBJECTID	OBJECTID	OBJECTID	OID	0	0	4	No
SHAPE	SHAPE	SHAPE	Geometry	0	0	0	Yes
ProviderID	ProviderID	ProviderID	Small Integer	0	0	2	Yes
TransTech	Technology_of_Transmission	Technology_of_Transmission	Small Integer	0	0	2	Yes
MxAdDwnSpd	Maximum_Advertised_Downstream_Speed	Maximum_Advertised_Downstream_Speed	Small Integer	0	0	2	Yes
MxAdUpSpd	Maximum_Advertised_Upstream_Speed	Maximum_Advertised_Upstream_Speed	Small Integer	0	0	2	Yes
TypDwnSpd	Typical_Downstream_Speed	Typical_Downstream_Speed	Small Integer	0	0	2	Yes
TypUpSpd	Typical_Upstream_Speed	Typical_Upstream_Speed	Small Integer	0	0	2	Yes
PolyType	Polygon_Type	PolyType	String	0	0	20	Yes
E911_RDN	E911_RDS_RDNAME_NUM	E911_RDN	Integer	0	0	4	Yes
BlockID	CENSUS_BLOCK_STFID	BlockID	String	0	0	20	Yes
AttribSrc	Attribute_Source	AttribSrc	Integer	0	0	4	Yes
AttribOrg	Attribute_Org	AttribOrg	Small Integer	0	0	2	Yes
DataSrc	Data_Source	DataSrc	Integer	0	0	4	Yes
SrcOrg	Source_Organization	SrcOrg	Small Integer	0	0	2	Yes
UpdDate	Update_Date	UPDDATE	Date	0	0	8	Yes
UpdAct	Update_Action	UPDACT	String	0	0	2	Yes
UpdUser	Update_User	UPDUSER	String	0	0	20	Yes
UpdNotes	Update_Notes	UpdNotes	String	0	0	255	Yes
SHAPE_Length	SHAPE_Length	SHAPE_Length	Double	0	0	8	Yes
SHAPE_Area	SHAPE_Area	SHAPE_Area	Double	0	0	8	Yes

Subtype Name	Default Value	Domain	
ObjectClass			
ProviderID		BB Provider Names and DBA and FRN	
TransTech		BB Technology of Transmission Codes	
MxAdDwnSpd		BB Download Speed Tier Code	
MxAdUpSpd		BB Upload Speed Tier Code	
TypDwnSpd		BB Download Speed Tier Code	
TypUpSpd		BB Upload Speed Tier Code	
PolyType		BB Polygon Type	
AttribSrc		BB Data Sources	
AttribOrg		BB Source Organization	
DataSrc		BB Data Sources	
SrcOrg		BB Source Organization	
UpdAct		BB Update Action	
UpdUser		BB Update User	
Index Name	Ascending	Unique	Fields
FDO_OBJECTID	Yes	Yes	OBJECTID
FDO_SHAPE	No	No	SHAPE

[Back to Top](#)

BBmmy_DSL_point

Alias	BBmmy_DSL_point	Geometry: Point					
Dataset Type	FeatureClass	Average Number of Points: 0					
FeatureType	Simple	Has M: No Has Z: No Grid Size: 0					
Field Name	Alias Name	Model Name	Type	Precn.	Scale	Length	Null
OBJECTID	OBJECTID	OBJECTID	OID	0	0	4	No
SHAPE	SHAPE	SHAPE	Geometry	0	0	0	Yes
ProviderID	ProviderID	ProviderID	Small Integer	0	0	2	Yes
TransTech	Technology_of_Transmission	Technology_of_Transmission	Small Integer	0	0	2	Yes
MxAdDwnSpd	Maximum_Advertised_Downstream_Speed	Maximum_Advertised_Downstream_Speed	Small Integer	0	0	2	Yes
MxAdUpSpd	Maximum_Advertised_Upstream_Speed	Maximum_Advertised_Upstream_Speed	Small Integer	0	0	2	Yes
TypDwnSpd	Typical_Downstream_Speed	Typical_Downstream_Speed	Small Integer	0	0	2	Yes
TypUpSpd	Typical_Upstream_Speed	Typical_Upstream_Speed	Small Integer	0	0	2	Yes
AttribSrc	Attribute_Source	AttribSrc	Small Integer	0	0	2	Yes
AttribOrg	Attribute_Org	AttribOrg	Small Integer	0	0	2	Yes
DataSrc	Data_Source	DataSrc	Integer	0	0	4	Yes
SrcOrg	Source_Organization	SrcOrg	Small Integer	0	0	2	Yes
UpdDate	Update_Date	UPDDATE	Date	0	0	8	Yes
UpdAct	Update_Action	UPDACT	String	0	0	2	Yes
UpdUser	Update_User	UPDUSER	String	0	0	20	Yes
UpdNotes	Update_Notes	UpdNotes	String	0	0	255	Yes
ESITEID	SITEID	ESITEID	Integer	0	0	4	Yes
Address	End_User_Address	Address	String	0	0	254	Yes
Bldgs_Num	End_User_Building_Number	Bldgs_Num	String	0	0	10	Yes
Prefix_Dir	End_User_Prefix_Direction	Prefix_Dir	String	0	0	5	Yes

Broadband Data Model
VT Broadband Mapping Initiative



Street	End_User_Street	Street	String	0	0	75	Yes
Street_Typ	End_User_Street_Type	Street_Typ	String	0	0	10	Yes
Suffix_Dir	End_User_Suffix_Direction	Suffix_Dir	String	0	0	5	Yes
City	End_User_City	City	String	0	0	75	Yes
State	End_User_State_Abbreviation	State	String	0	0	2	Yes
Zip	End_User_Zipcode	Zip	String	0	0	5	Yes
Zip4	End_User_Zip_Pus4	Zip4	String	0	0	4	Yes
Subtype Name	Default Value		Domain				
ObjectClass							
ProviderID			BB Provider Names and DBA and FRN				
TransTech			BB Technology of Transmission Codes				
MxAdDwnSpd			BB Download Speed Tier Code				
MxAdUpSpd			BB Upload Speed Tier Code				
TypDwnSpd			BB Download Speed Tier Code				
TypUpSpd			BB Upload Speed Tier Code				
AttribSrc			BB Data Sources				
AttribOrg			BB Source Organization				
DataSrc			BB Data Sources				
SrcOrg			BB Source Organization				
UpdAct			BB Update Action				
UpdUser			BB Update User				
Index Name	Ascending	Unique		Fields			
FDO_OBJECTID	Yes	Yes		OBJECTID			
FDO_SHAPE	No	No		SHAPE			

[Back to Top](#)

BBmmyy_DSL_poly

Alias	BBmmyy_DSL_poly	Geometry: Polygon					
Dataset Type	FeatureClass	Average Number of Points: 0					
FeatureType	Simple	Has M: No					
		Has Z: No					
		Grid Size: 1600					
Field Name	Alias Name	Model Name	Type	Precn.	Scale	Length	Null
OBJECTID	OBJECTID	OBJECTID	OID	0	0	4	No
SHAPE	SHAPE	SHAPE	Geometry	0	0	0	Yes
ProviderID	ProviderID	ProviderID	Small Integer	0	0	2	Yes
TransTech	Technology_of_Transmission	Technology_of_Transmission	Small Integer	0	0	2	Yes
MxAdDwnSpd	Maximum_Advertised_Downstream_Speed	Maximum_Advertised_Downstream_Speed	Small Integer	0	0	2	Yes
MxAdUpSpd	Maximum_Advertised_Upstream_Speed	Maximum_Advertised_Upstream_Speed	Small Integer	0	0	2	Yes
TypDwnSpd	Typical_Downstream_Speed	Typical_Downstream_Speed	Small Integer	0	0	2	Yes
TypUpSpd	Typical_Upstream_Speed	Typical_Upstream_Speed	Small Integer	0	0	2	Yes
PolyType	Polygon_Type	PolyType	String	0	0	20	Yes
AttribSrc	Attribute_Source	AttribSrc	Integer	0	0	4	Yes
AttribOrg	Attribute_Org	AttribOrg	Small Integer	0	0	2	Yes
DataSrc	Data_Source	DataSrc	Integer	0	0	4	Yes
SrcOrg	Source_Organization	SrcOrg	Small Integer	0	0	2	Yes
UpdDate	Update_Date	UPDDATE	Date	0	0	8	Yes

Broadband Data Model
VT Broadband Mapping Initiative



UpdAct	Update_Action	UPDACT	String	0	0	2	Yes
UpdUser	Update_User	UPDUSER	String	0	0	20	Yes
UpdNotes	Update_Notes	UpdNotes	String	0	0	255	Yes
SHAPE_Length	SHAPE_Length	SHAPE_Length	Double	0	0	8	Yes
SHAPE_Area	SHAPE_Area	SHAPE_Area	Double	0	0	8	Yes
Subtype Name	Default Value		Domain				
ObjectClass							
ProviderID			BB Provider Names and DBA and FRN				
TransTech			BB Technology of Transmission Codes				
MxAdDwnSpd			BB Download Speed Tier Code				
MxAdUpSpd			BB Upload Speed Tier Code				
TypDwnSpd			BB Download Speed Tier Code				
TypUpSpd			BB Upload Speed Tier Code				
PolyType			BB Polygon Type				
AttribSrc			BB Data Sources				
AttribOrg			BB Source Organization				
DataSrc			BB Data Sources				
SrcOrg			BB Source Organization				
UpdAct			BB Update Action				
UpdUser			BB Update User				
Index Name	Ascending	Unique	Fields				
FDO_OBJECTID	Yes	Yes	OBJECTID				
FDO_SHAPE	No	No	SHAPE				

[Back to Top](#)

BBmmyy_Feedback

Alias	BBmmyy_Feedback						
Dataset Type	Table						
FeatureType							
Field Name	Alias Name	Model Name	Type	Precn.	Scale	Length	Null
OBJECTID	OBJECTID	OBJECTID	OID	0	0	4	No
TimeStamp			Date	0	0	8	Yes
Type			Small Integer	0	0	2	Yes
Source			Small Integer	0	0	2	Yes
HouseNum			String	0	0	10	Yes
StreetName			String	0	0	100	Yes
SuiteApt			String	0	0	10	Yes
E911Town	E911Town	E911Town	String	0	0	100	Yes
MailTown			String	0	0	100	Yes
State			String	0	0	2	Yes
Zip			String	0	0	15	Yes
ESITEID			Integer	0	0	4	Yes
FeedBk_ID	Feedback ID	FeedBk_ID	Integer	0	0	4	Yes
DSL	DSL	DSL	String	0	0	1	Yes
Cable	Cable	Cable	String	0	0	1	Yes
Fiber	Fiber	Fiber	String	0	0	1	Yes

Broadband Data Model
VT Broadband Mapping Initiative



Ocopper	Ocopper	Ocopper	String	0	0	1	Yes
WISP	WISP	WISP	String	0	0	1	Yes
CellData	CellData	CellData	String	0	0	1	Yes
CellVoice	CellVoice	CellVoice	String	0	0	1	Yes
SpeedTest	SpeedTest	SpeedTest	String	0	0	1	Yes
Speed			Single	0	0	4	Yes
DataSrc	Data_Source	DataSrc	Integer	0	0	4	Yes
SrcOrg	Source_Organization	SrcOrg	Small Integer	0	0	2	Yes
Subtype Name	Default Value		Domain				
ObjectClass							
E911Town			BB E911 Town Names				
DSL			BB Yes No Unknown				
Cable			BB Yes No Unknown				
Fiber			BB Yes No Unknown				
Ocopper			BB Yes No Unknown				
WISP			BB Yes No Unknown				
CellData			BB Yes No Unknown				
CellVoice			BB Yes No Unknown				
SpeedTest			BB Yes No				
DataSrc			BB Data Sources				
SrcOrg			BB Source Organization				
Index Name	Ascending	Unique		Fields			
FDO_OBJECTID	Yes	Yes		OBJECTID			

[Back to Top](#)

BBmmyy_Fiber_point

Alias	BBmmyy_Fiber_point	Geometry: Point					
Dataset Type	FeatureClass	Average Number of Points: 0					
FeatureType	Simple	Has M: No					
		Has Z: No					
		Grid Size: 139.89359255645149					
Field Name	Alias Name	Model Name	Type	Precn.	Scale	Length	Null
OBJECTID	OBJECTID	OBJECTID	OID	0	0	4	No
SHAPE	SHAPE	SHAPE	Geometry	0	0	0	Yes
ProviderID	ProviderID	ProviderID	Small Integer	0	0	2	Yes
TransTech	Technology_of_Transmission	Technology_of_Transmission	Small Integer	0	0	2	Yes
MxAdDwnSpd	Maximum_Advertised_Downstream_Speed	Maximum_Advertised_Downstream_Speed	Small Integer	0	0	2	Yes
MxAdUpSpd	Maximum_Advertised_Upstream_Speed	Maximum_Advertised_Upstream_Speed	Small Integer	0	0	2	Yes
TypDwnSpd	Typical_Downstream_Speed	Typical_Downstream_Speed	Small Integer	0	0	2	Yes
TypUpSpd	Typical_Upstream_Speed	Typical_Upstream_Speed	Small Integer	0	0	2	Yes
AttribSrc	Attribute_Source	AttribSrc	Integer	0	0	4	Yes
AttribOrg	Attribute_Org	AttribOrg	Small Integer	0	0	2	Yes
DataSrc	Data_Source	DataSrc	Integer	0	0	4	Yes
SrcOrg	Source_Organization	SrcOrg	Small Integer	0	0	2	Yes
UpdDate	Update_Date	UPDDATE	Date	0	0	8	Yes
UpdAct	Update_Action	UPDACT	String	0	0	2	Yes
UpdUser	Update_User	UPDUSER	String	0	0	20	Yes

Broadband Data Model
VT Broadband Mapping Initiative



UpdNotes	Update_Notes	UpdNotes	String	0	0	255	Yes
ESITEID	SITEID	ESITEID	Integer	0	0	4	Yes
Address	End_User_Address	Address	String	0	0	254	Yes
Bldgs_Num	End_User_Building_Number	Bldgs_Num	String	0	0	10	Yes
Prefix_Dir	End_User_Prefix_Direction	Prefix_Dir	String	0	0	5	Yes
Street	End_User_Street	Street	String	0	0	75	Yes
Street_Typ	End_User_Street_Type	Street_Typ	String	0	0	10	Yes
Suffix_Dir	End_User_Suffix_Direction	Suffix_Dir	String	0	0	5	Yes
City	End_User_City	City	String	0	0	75	Yes
State	End_User_State_Abbreviation	State	String	0	0	2	Yes
Zip	End_User_Zipcode	Zip	String	0	0	5	Yes
Zip4	End_User_Zip_Pus4	Zip4	String	0	0	4	Yes
Subtype Name	Default Value		Domain				
ObjectClass							
ProviderID			BB Provider Names and DBA and FRN				
TransTech			BB Technology of Transmission Codes				
MxAdDwnSpd			BB Download Speed Tier Code				
MxAdUpSpd			BB Upload Speed Tier Code				
TypDwnSpd			BB Download Speed Tier Code				
TypUpSpd			BB Upload Speed Tier Code				
AttribSrc			BB Data Sources				
AttribOrg			BB Source Organization				
DataSrc			BB Data Sources				
SrcOrg			BB Source Organization				
UpdAct			BB Update Action				
UpdUser			BB Update User				
Index Name	Ascending	Unique		Fields			
FDO_OBJECTID	Yes	Yes		OBJECTID			
FDO_SHAPE	No	No		SHAPE			

[Back to Top](#)

BBmmyy_Fiber_poly

Alias	BBmmyy_Fiber_poly	Geometry: Polygon				
Dataset Type	FeatureClass	Average Number of Points: 0				
FeatureType	Simple	Has M: No Has Z: No Grid Size: 0				
Field Name	Alias Name	Model Name	Type	Precn.	Scale	LengthNull
OBJECTID	OBJECTID	OBJECTID	OID	0	0	4 No
SHAPE	SHAPE	SHAPE	Geometry	0	0	0 Yes
ProviderID	ProviderID	ProviderID	Small Integer	0	0	2 Yes
TransTech	Technology_of_Transmission	Technology_of_Transmission	Small Integer	0	0	2 Yes
MxAdDwnSpd	Maximum_Advertised_Downstream_Speed	Maximum_Advertised_Downstream_Speed	Small Integer	0	0	2 Yes
MxAdUpSpd	Maximum_Advertised_Upstream_Speed	Maximum_Advertised_Upstream_Speed	Small Integer	0	0	2 Yes
TypDwnSpd	Typical_Downstream_Speed	Typical_Downstream_Speed	Small Integer	0	0	2 Yes
TypUpSpd	Typical_Upstream_Speed	Typical_Upstream_Speed	Small Integer	0	0	2 Yes
PolyType	Polygon_Type	PolyType	String	0	0	20 Yes

Broadband Data Model
VT Broadband Mapping Initiative



AttribSrc	Attribute_Source	AttribSrc	Integer	0	0	4	Yes
AttribOrg	Attribute_Org	AttribOrg	Small Integer	0	0	2	Yes
DataSrc	Data_Source	DataSrc	Integer	0	0	4	Yes
SrcOrg	Source_Organization	SrcOrg	Small Integer	0	0	2	Yes
UpdDate	Update_Date	UPDDATE	Date	0	0	8	Yes
UpdAct	Update_Action	UPDACT	String	0	0	2	Yes
UpdUser	Update_User	UPDUSER	String	0	0	20	Yes
UpdNotes	Update_Notes	UpdNotes	String	0	0	255	Yes
SHAPE_Length	SHAPE_Length	SHAPE_Length	Double	0	0	8	Yes
SHAPE_Area	SHAPE_Area	SHAPE_Area	Double	0	0	8	Yes
Subtype Name	Default Value		Domain				
ObjectClass							
ProviderID			BB Provider Names and DBA and FRN				
TransTech			BB Technology of Transmission Codes				
MxAdDwnSpd			BB Download Speed Tier Code				
MxAdUpSpd			BB Upload Speed Tier Code				
TypDwnSpd			BB Download Speed Tier Code				
TypUpSpd			BB Upload Speed Tier Code				
PolyType			BB Polygon Type				
AttribSrc			BB Data Sources				
AttribOrg			BB Source Organization				
DataSrc			BB Data Sources				
SrcOrg			BB Source Organization				
UpdAct			BB Update Action				
UpdUser			BB Update User				
Index Name	Ascending	Unique	Fields				
FDO_OBJECTID	Yes	Yes	OBJECTID				
FDO_SHAPE	No	No	SHAPE				

[Back to Top](#)

BBmmyy_LastMidBackH_point

Alias	BBmmyy_LastMidBackH_point		Geometry: Point				
Dataset Type	FeatureClass		Average Number of Points: 0				
FeatureType	Simple		Has M: No				
			Has Z: Yes				
			Grid Size: 0				
Field Name	Alias Name	Model Name	Type	Precn.	Scale	Length	Null
OBJECTID	OBJECTID	OBJECTID	OID	0	0	4	No
SHAPE	SHAPE	SHAPE	Geometry	0	0	0	Yes
ProviderID	ProviderID	ProviderID	Small Integer	0	0	2	Yes
Type	Type	Type	String	0	0	2	Yes
FacType	Serving_Facility_Backhaul_Type	Serving_Facility_Backhaul_Type	Small Integer	0	0	2	Yes
TransTech	Technology_of_Transmission	Technology_of_Transmission	Small Integer	0	0	2	Yes
BackH_Cap	Serving_Facility_Backhaul_Capacity	Serving_Facility_Backhaul_Capacity	Small Integer	0	0	2	Yes
InterX_Cap	Interconnect_Data_Point_Rate	InterX_Cap	Small Integer	0	0	2	Yes
Ownership	Ownership	Ownership	Small Integer	0	0	2	Yes
EndUsrSrvd	End_users_served	EndUsrSrvd	Small Integer	0	0	2	Yes

Broadband Data Model
VT Broadband Mapping Initiative



Latitude			Single	0	0	4	Yes
Longitude			Single	0	0	4	Yes
Elevation	Elevation	Elevation	Integer	0	0	4	Yes
AttribSrc	Attribute_Source	AttribSrc	Integer	0	0	4	Yes
AttribOrg	Attribute_Org	AttribOrg	Small Integer	0	0	2	Yes
DataSrc	Data_Source	DataSrc	Integer	0	0	4	Yes
SrcOrg	Source_Organization	SrcOrg	Small Integer	0	0	2	Yes
UpdDate	Update_Date	UPDDATE	Date	0	0	8	Yes
UpdAct	Update_Action	UPDACT	String	0	0	2	Yes
UpdUser	Update_User	UPDUSER	String	0	0	20	Yes
UpdNotes	Update_Notes	UpdNotes	String	0	0	255	Yes
Subtype Name	Default Value		Domain				
ObjectClass							
ProviderID			BB Provider Names and DBA and FRN				
Type			BB Lastmile Middlemile Backhaul				
FacType			BB Serving Facility Type				
TransTech			BB Technology of Transmission Codes				
BackH_Cap			BB Serving Facility Backhaul Data Rates				
InterX_Cap			BB Serving Facility Interconnection Data Rates				
Ownership			BB Owned or Leased				
EndUsrSrvd	-99		-				
Elevation	0		-				
AttribSrc			BB Data Sources				
AttribOrg			BB Source Organization				
DataSrc			BB Data Sources				
SrcOrg			BB Source Organization				
UpdAct			BB Update Action				
UpdUser			BB Update User				
Index Name	Ascending	Unique	Fields				
FDO_OBJECTID	Yes	Yes	OBJECTID				
FDO_SHAPE	No	No	SHAPE				

[Back to Top](#)

BBmmyy_OtherWireline_point

Alias	BBmmyy_OtherWireline_point	Geometry: Point					
Dataset Type	FeatureClass	Average Number of Points: 0					
FeatureType	Simple	Has M: No					
		Has Z: No					
		Grid Size: 0					
Field Name	Alias Name	Model Name	Type	Precn.	Scale	Length	Null
OBJECTID	OBJECTID	OBJECTID	OID	0	0	4	No
SHAPE	SHAPE	SHAPE	Geometry	0	0	0	Yes
ProviderID	ProviderID	ProviderID	Small Integer	0	0	2	Yes
TransTech	Technology_of_Transmission	Technology_of_Transmission	Small Integer	0	0	2	Yes
MxAdDwnSpd	Maximum_Advertised_Downstream_Speed	Maximum_Advertised_Downstream_Speed	Small Integer	0	0	2	Yes
MxAdUpSpd	Maximum_Advertised_Upstream_Speed	Maximum_Advertised_Upstream_Speed	Small Integer	0	0	2	Yes
TypDwnSpd	Typical_Downstream_Speed	Typical_Downstream_Speed	Small Integer	0	0	2	Yes

Broadband Data Model
VT Broadband Mapping Initiative



TypUpSpd	Typical_Upstream_Speed	Typical_Upstream_Speed	Small Integer	0	0	2	Yes
AttribSrc	Attribute_Source	AttribSrc	Integer	0	0	4	Yes
AttribOrg	Attribute_Org	AttribOrg	Small Integer	0	0	2	Yes
DataSrc	Data_Source	DataSrc	Integer	0	0	4	Yes
SrcOrg	Source_Organization	SrcOrg	Small Integer	0	0	2	Yes
UpdDate	Update_Date	UPDDATE	Date	0	0	8	Yes
UpdAct	Update_Action	UPDACT	String	0	0	2	Yes
UpdUser	Update_User	UPDUSER	String	0	0	20	Yes
UpdNotes	Update_Notes	UpdNotes	String	0	0	255	Yes

Subtype Name	Default Value	Domain
ObjectClass		
ProviderID		BB Provider Names and DBA and FRN
TransTech		BB Technology of Transmission Codes
MxAdDwnSpd		BB Download Speed Tier Code
MxAdUpSpd		BB Upload Speed Tier Code
TypDwnSpd		BB Download Speed Tier Code
TypUpSpd		BB Upload Speed Tier Code
AttribSrc		BB Data Sources
AttribOrg		BB Source Organization
DataSrc		BB Data Sources
SrcOrg		BB Source Organization
UpdAct		BB Update Action
UpdUser		BB Update User
Index Name	Ascending	Unique
FDO_OBJECTID	Yes	Yes
FDO_SHAPE	No	No
		Fields
		OBJECTID
		SHAPE

[Back to Top](#)

BBmmy_Output_Addresses

Alias	BBmmy_Output_Addresses	Geometry: Point					
Dataset Type	FeatureClass	Average Number of Points: 0					
FeatureType	Simple	Has M: No Has Z: No Grid Size: 0					
Field Name	Alias Name	Model Name	Type	Precn.	Scale	Length	Null
OBJECTID	OBJECTID	OBJECTID	OID	0	0	4	No
SHAPE	SHAPE	SHAPE	Geometry	0	0	0	Yes
ProvidName	Provider Name	Provider_Name	String	0	0	100	Yes
DBA_Name			String	0	0	100	Yes
FRN			String	0	0	20	Yes
RecNum	Seq_record_number	RecNum	Small Integer	0	0	2	Yes
Address	End_User_Address	Address	String	0	0	254	Yes
Bldgs_Num	End_User_Building_Number	Bldgs_Num	String	0	0	10	Yes
Prefix_Dir	End_User_Prefix_Direction	Prefix_Dir	String	0	0	5	Yes
Street	End_User_Street	Street	String	0	0	75	Yes
Street_Typ	End_User_Street_Type	Street_Typ	String	0	0	10	Yes
Suffix_Dir	End_User_Suffix_Direction	Suffix_Dir	String	0	0	5	Yes

Broadband Data Model
VT Broadband Mapping Initiative



City	End_User_City	City	String	0	0	75	Yes
State	End_User_State_Abbreviation	State	String	0	0	2	Yes
Zip	End_User_Zipcode	Zip	String	0	0	5	Yes
Zip4	End_User_Zip_Pus4	Zip4	String	0	0	4	Yes
End_User	Category_of_End_User	Category_of_End_User	Small Integer	0	0	2	Yes
TransTech	Technology_of_Transmission	Technology_of_Transmission	Small Integer	0	0	2	Yes
MxAdDwnSpd	Maximum_Advertised_Downstream_Speed	Maximum_Advertised_Downstream_Speed	Small Integer	0	0	2	Yes
MxAdUpSpd	Maximum_Advertised_Upstream_Speed	Maximum_Advertised_Upstream_Speed	Small Integer	0	0	2	Yes
TypDwnSpd	Typical_Downstream_Speed	Typical_Downstream_Speed	Small Integer	0	0	2	Yes
TypUpSpd	Typical_Upstream_Speed	Typical_Upstream_Speed	Small Integer	0	0	2	Yes
ESITEID	ESITE_SITEID	ESITEID	Integer	0	0	4	Yes
Subtype Name	Default Value			Domain			
ObjectClass							
End_User			BB End User Codes				
TransTech			BB Technology of Transmission Codes				
MxAdDwnSpd			BB Download Speed Tier Code				
MxAdUpSpd			BB Upload Speed Tier Code				
TypDwnSpd			BB Download Speed Tier Code				
TypUpSpd			BB Upload Speed Tier Code				
Index Name	Ascending	Unique	Fields				
FDO_OBJECTID	Yes	Yes	OBJECTID				
FDO_SHAPE	No	No	SHAPE				

[Back to Top](#)

BBmmy_Output_Anchor

Alias	BBmmy_Output_Anchor		Geometry: Point				
Dataset Type	FeatureClass		Average Number of Points: 0				
FeatureType	Simple		Has M: No				
			Has Z: No				
			Grid Size: 0				
Field Name	Alias Name	Model Name	Type	Precn.	Scale	Length	Null
OBJECTID	OBJECTID	OBJECTID	OID	0	0	4	No
SHAPE	SHAPE	SHAPE	Geometry	0	0	0	Yes
Name			String	0	0	100	Yes
Address	Full_Address	Address	String	0	0	255	Yes
Latitude			Single	0	0	4	Yes
Longitude			Single	0	0	4	Yes
Category	Category	Category	Small Integer	0	0	2	Yes
Broadband	Broadband_Service	Broadband_Service	String	0	0	1	Yes
TransTech	Technology_of_Transmission	Technology_of_Transmission	Small Integer	0	0	2	Yes
AdDwnSpeed	Advertised_Down_Stream_Service_Speed	Advertised_Down_Stream_Service_Speed	Small Integer	0	0	2	Yes
AdUpSpeed	Advertised_Upstream_Service_Speed	Advertised_Upstream_Service_Speed	Small Integer	0	0	2	Yes
Subtype Name	Default Value			Domain			
ObjectClass							
Category			BB Community Anchor Institution Category Codes				
Broadband			BB Yes No Unknown				
TransTech			BB Technology of Transmission Codes				

AdDwnSpeed				BB Download Speed Tier Code
AdUpSpeed				BB Upload Speed Tier Code
Index Name	Ascending	Unique		Fields
FDO_OBJECTID	Yes	Yes		OBJECTID
FDO_SHAPE	No	No		SHAPE

[Back to Top](#)

BBmmy_Output_Blocks

Alias	BBmmy_Output_Blocks		Geometry: Polygon
Dataset Type	FeatureClass		Average Number of Points: 0
FeatureType	Simple		Has M: No Has Z: No Grid Size: 0
Field Name	Alias Name	Model Name	Type Precn. Scale Length Null
OBJECTID	OBJECTID	OBJECTID	OID 0 0 4 No
SHAPE	SHAPE	SHAPE	Geometry 0 0 0 Yes
BlockID	CENSUS_BLOCK_STFID	STFID	String 0 0 20 Yes
ProviderID	ProviderID	ProviderID	Small Integer 0 0 2 Yes
FRN			String 0 0 20 Yes
TransTech	Technology_of_Transmission	Technology_of_Transmission	Small Integer 0 0 2 Yes
MxAdDwnSpd	Maximum_Advertised_Downstream_Speed	Maximum_Advertised_Downstream_Speed	Small Integer 0 0 2 Yes
MxAdUpSpd	Maximum_Advertised_Upstream_Speed	Maximum_Advertised_Upstream_Speed	Small Integer 0 0 2 Yes
TypDwnSpd	Typical_Downstream_Speed	Typical_Downstream_Speed	Small Integer 0 0 2 Yes
TypUpSpd	Typical_Upstream_Speed	Typical_Upstream_Speed	Small Integer 0 0 2 Yes
AttribSrc	Attribute_Source	AttribSrc	Integer 0 0 4 Yes
AttribOrg	Attribute_Org	AttribOrg	Small Integer 0 0 2 Yes
DataSrc	Data_Source	DataSrc	Integer 0 0 4 Yes
SrcOrg	Source_Organization	SrcOrg	Small Integer 0 0 2 Yes
UpdDate	Update_Date	UPDDATE	Date 0 0 8 Yes
UpdAct	Update_Action	UPDACT	String 0 0 2 Yes
UpdUser	Update_User	UPDUSER	String 0 0 20 Yes
UpdNotes	Update_Notes	UpdNotes	String 0 0 255 Yes
SHAPE_Length	SHAPE_Length	SHAPE_Length	Double 0 0 8 Yes
SHAPE_Area	SHAPE_Area	SHAPE_Area	Double 0 0 8 Yes
Subtype Name	Default Value		Domain
ObjectClass			
ProviderID			BB Provider Names and DBA and FRN
TransTech			BB Technology of Transmission Codes
MxAdDwnSpd			BB Download Speed Tier Code
MxAdUpSpd			BB Upload Speed Tier Code
TypDwnSpd			BB Download Speed Tier Code
TypUpSpd			BB Upload Speed Tier Code
AttribSrc			BB Data Sources
AttribOrg			BB Source Organization
DataSrc			BB Data Sources
SrcOrg			BB Source Organization
UpdAct			BB Update Action

UpdUser				BB Update User
Index Name	Ascending	Unique	Fields	
FDO_OBJECTID	Yes	Yes	OBJECTID	
FDO_SHAPE	No	No	SHAPE	

[Back to Top](#)

BBmmy_Output_Streets

Alias	BBmmy_Output_Streets		Geometry: Polyline				
Dataset Type	FeatureClass		Average Number of Points: 0				
FeatureType	Simple		Has M: No				
			Has Z: No				
			Grid Size: 0				
Field Name	Alias Name	Model Name	Type	Precn.	Scale	Length	Null
OBJECTID	OBJECTID	OBJECTID	OID	0	0	4	No
SHAPE	SHAPE	SHAPE	Geometry	0	0	0	Yes
ProvIDName	Provider Name	Provider_Name	String	0	0	100	Yes
DBA_Name			String	0	0	100	Yes
FRN			String	0	0	20	Yes
RecNum	Seq_record_number	RecNum	Small Integer	0	0	2	Yes
LFROMADD	LEFT_FROMADD	LFROMADD	Integer	0	0	4	Yes
LTOADD	LEFT_TOADD	LTOADD	Integer	0	0	4	Yes
RFROMADD	RIGHT_FROMADD	RFROMADD	Integer	0	0	4	Yes
RTOADD	RIGHT_TOADD	RTOADD	Integer	0	0	4	Yes
Prefix_Dir	End_User_Prefix_Direction	Prefix_Dir	String	0	0	5	Yes
Street	End_User_Street	Street	String	0	0	75	Yes
Street_Typ	End_User_Street_Type	Street_Typ	String	0	0	10	Yes
Suffix_Dir	End_User_Suffix_Direction	Suffix_Dir	String	0	0	5	Yes
City	End_User_City	City	String	0	0	75	Yes
State	End_User_State_Abbreviation	State	String	0	0	2	Yes
Zip	End_User_Zipcode	Zip	String	0	0	5	Yes
Zip4	End_User_Zip_Pus4	Zip4	String	0	0	4	Yes
TransTech	Technology_of_Transmission	Technology_of_Transmission	Small Integer	0	0	2	Yes
MxAdDwnSpd	Maximum_Advertised_Downstream_Speed	Maximum_Advertised_Downstream_Speed	Small Integer	0	0	2	Yes
MxAdUpSpd	Maximum_Advertised_Upstream_Speed	Maximum_Advertised_Upstream_Speed	Small Integer	0	0	2	Yes
TypDwnSpd	Typical_Downstream_Speed	Typical_Downstream_Speed	Small Integer	0	0	2	Yes
TypUpSpd	Typical_Upstream_Speed	Typical_Upstream_Speed	Small Integer	0	0	2	Yes
SHAPE_Length	SHAPE_Length	SHAPE_Length	Double	0	0	8	Yes
Subtype Name	Default Value	Domain					
ObjectClass							
TransTech		BB Technology of Transmission Codes					
MxAdDwnSpd		BB Download Speed Tier Code					
MxAdUpSpd		BB Upload Speed Tier Code					
TypDwnSpd		BB Download Speed Tier Code					
TypUpSpd		BB Upload Speed Tier Code					
Index Name	Ascending	Unique	Fields				
FDO_OBJECTID	Yes	Yes	OBJECTID				
FDO_SHAPE	No	No	SHAPE				

[Back to Top](#)

BBmmy_SpeedByMSARSA

Alias		BBmmy_SpeedByMSARSA							
Dataset Type		Table							
FeatureType									
Field Name	Alias Name	Model Name	Type	Precn.	Scale	Length	Null		
OBJECTID	OBJECTID	OBJECTID	OID	0	0	4	No		
ProviderID	ProviderID	ProviderID	Small Integer	0	0	2	Yes		
ProvidName	Provider_Name	ProvidName	String	0	0	100	Yes		
DBA_Name			String	0	0	100	Yes		
FRN			String	0	0	20	Yes		
MSARSA_ID	MSA_or_RSA_ID	County	Integer	0	0	4	Yes		
Weight_Spd	Subscriber_Weighted_Nominal_Speed	Weight_Spd	Single	0	0	4	Yes		
MxAdDwnSpd	MxAdDwnSpd	MxAdDwnSpd	Small Integer	0	0	2	Yes		
MxAdUpSpd	MxAdUpSpd	MxAdUpSpd	Small Integer	0	0	2	Yes		
TypDwnSpd	TypDwnSpd	TypDwnSpd	Small Integer	0	0	2	Yes		
TypUpSpd	TypUpSpd	TypUpSpd	Small Integer	0	0	2	Yes		
TransTech	TransTech	TransTech	Small Integer	0	0	2	Yes		
AttribSrc	Attribute_Source	AttribSrc	Integer	0	0	4	Yes		
AttribOrg	Attribute_Org	AttribOrg	Small Integer	0	0	2	Yes		
Subtype Name	Default Value	Domain							
ObjectClass		BB Provider Names and DBA and FRN BB Download Speed Tier Code BB Upload Speed Tier Code BB Download Speed Tier Code BB Upload Speed Tier Code BB Technology of Transmission Codes BB Data Sources BB Source Organization							
Index Name	Ascending	Unique	Fields						
FDO_OBJECTID	Yes	Yes	OBJECTID						

[Back to Top](#)

BBmmy_Wireless_point

Alias		BBmmy_Wireless_point		Geometry:Point			
Dataset Type		FeatureClass		Average Number of Points:0			
FeatureType		Simple		Has M:No			
				Has Z:Yes			
				Grid Size:0			
Field Name	Alias Name	Model Name	Type	Precn.	Scale	Length	Null
OBJECTID	OBJECTID	OBJECTID	OID	0	0	4	No
SHAPE	SHAPE	SHAPE	Geometry	0	0	0	Yes

Broadband Data Model
VT Broadband Mapping Initiative



ProviderID	ProviderID	ProviderID	Small Integer	0	0	2	Yes
TransTech	Technology_of_Transmission	Technology_of_Transmission	Small Integer	0	0	2	Yes
MxAdDwnSpd	Maximum_Advertised_Downstream_Speed	Maximum_Advertised_Downstream_Speed	Small Integer	0	0	2	Yes
MxAdUpSpd	Maximum_Advertised_Upstream_Speed	Maximum_Advertised_Upstream_Speed	Small Integer	0	0	2	Yes
TypDwnSpd	Typical_Downstream_Speed	Typical_Downstream_Speed	Small Integer	0	0	2	Yes
TypUpSpd	Typical_Upstream_Speed	Typical_Upstream_Speed	Small Integer	0	0	2	Yes
SpecUsed	Spectrum_Used	SpecUsed	Small Integer	0	0	2	Yes
Type	Type_of_Wireless_Point	Type	Small Integer	0	0	2	Yes
AttribSrc	Attribute_Source	AttribSrc	Integer	0	0	4	Yes
AttribOrg	Attribute_Org	AttribOrg	Small Integer	0	0	2	Yes
DataSrc	Data_Source	DataSrc	Integer	0	0	4	Yes
SrcOrg	Source_Organization	SrcOrg	Small Integer	0	0	2	Yes
UpdDate	Update_Date	UPDDATE	Date	0	0	8	Yes
UpdAct	Update_Action	UPDACT	String	0	0	2	Yes
UpdUser	Update_User	UPDUSER	String	0	0	20	Yes
UpdNotes	Update_Notes	UpdNotes	String	0	0	255	Yes
Subtype Name	Default Value		Domain				
ObjectClass							
ProviderID							BB Provider Names and DBA and FRN
TransTech							BB Technology of Transmission Codes
MxAdDwnSpd							BB Download Speed Tier Code
MxAdUpSpd							BB Upload Speed Tier Code
TypDwnSpd							BB Download Speed Tier Code
TypUpSpd							BB Upload Speed Tier Code
SpecUsed							BB Spectrum Used
Type							BB Wireless Point Type
AttribSrc							BB Data Sources
AttribOrg							BB Source Organization
DataSrc							BB Data Sources
SrcOrg							BB Source Organization
UpdAct							BB Update Action
UpdUser							BB Update User
Index Name	Ascending	Unique	Fields				
FDO_OBJECTID	Yes	Yes	OBJECTID				
FDO_SHAPE	No	No	SHAPE				

[Back to Top](#)

BBmmyy_Wireless_poly

Alias	BBmmyy_Wireless_poly	Geometry: Polygon					
Dataset Type	FeatureClass	Average Number of Points: 0					
FeatureType	Simple	Has M: No					
		Has Z: No					
		Grid Size: 0					
Field Name	Alias Name	Model Name	Type	Precn.	Scale	Length	Null
OBJECTID	OBJECTID	OBJECTID	OID	0	0	4	No
SHAPE	SHAPE	SHAPE	Geometry	0	0	0	Yes
ProviderID	ProviderID	ProviderID	Small Integer	0	0	2	Yes

Broadband Data Model
VT Broadband Mapping Initiative



TransTech	Technology_of_Transmission	Technology_of_Transmission	Small Integer	0	0	2	Yes
MxAdDwnSpd	Maximum_Advertised_Downstream_Speed	Maximum_Advertised_Downstream_Speed	Small Integer	0	0	2	Yes
MxAdUpSpd	Maximum_Advertised_Upstream_Speed	Maximum_Advertised_Upstream_Speed	Small Integer	0	0	2	Yes
TypDwnSpd	Typical_Downstream_Speed	Typical_Downstream_Speed	Small Integer	0	0	2	Yes
TypUpSpd	Typical_Upstream_Speed	Typical_Upstream_Speed	Small Integer	0	0	2	Yes
SpecUsed	Spectrum_Used	SpecUsed	Small Integer	0	0	2	Yes
PolyType	Polygon_Type	PolyType	String	0	0	20	Yes
AttribSrc	Attribute_Source	AttribSrc	Integer	0	0	4	Yes
AttribOrg	Attribute_Org	AttribOrg	Small Integer	0	0	2	Yes
DataSrc	Data_Source	DataSrc	Integer	0	0	4	Yes
SrcOrg	Source_Organization	SrcOrg	Small Integer	0	0	2	Yes
UpdDate	Update_Date	UPDDATE	Date	0	0	8	Yes
UpdAct	Update_Action	UPDACT	String	0	0	2	Yes
UpdUser	Update_User	UPDUSER	String	0	0	20	Yes
UpdNotes	Update_Notes	UpdNotes	String	0	0	255	Yes
SHAPE_Length	SHAPE_Length	SHAPE_Length	Double	0	0	8	Yes
SHAPE_Area	SHAPE_Area	SHAPE_Area	Double	0	0	8	Yes
Subtype Name	Default Value		Domain				
ObjectClass							
ProviderID			BB Provider Names and DBA and FRN				
TransTech			BB Technology of Transmission Codes				
MxAdDwnSpd			BB Download Speed Tier Code				
MxAdUpSpd			BB Upload Speed Tier Code				
TypDwnSpd			BB Download Speed Tier Code				
TypUpSpd			BB Upload Speed Tier Code				
SpecUsed			BB Spectrum Used				
PolyType			BB Polygon Type				
AttribSrc			BB Data Sources				
AttribOrg			BB Source Organization				
DataSrc			BB Data Sources				
SrcOrg			BB Source Organization				
UpdAct			BB Update Action				
UpdUser			BB Update User				
Index Name	Ascending	Unique	Fields				
FDO_OBJECTID	Yes	Yes	OBJECTID				
FDO_SHAPE	No	No	SHAPE				

[Back to Top](#)

Spatial References

Dimension	Minimum	Precision
BBmmy_Anchor_point		
X	-5123000	10000
Y	-14708800	

M	-	-
Z	-	-
Coordinate System Description		
PROJCS["NAD_1983_StatePlane_Vermont_FIPS_4400",GEOGCS["GCS_North_American_1983",DATUM["D_North_American_1983",SPHEROID["GRS_1980",6378137.0,298.257222101]],PRIMEM["Greenwich",0.0],UNIT["Degree",0.0174532925199433]],PROJECTION["Transverse_Mercator"],PARAMETER["False_Easting",500000.0],PARAMETER["False_Northing",0.0],PARAMETER["Central_Meridian",-72.5],PARAMETER["Scale_Factor",0.9999642857142858],PARAMETER["Latitude_Of_Origin",42.5],UNIT["Meter",1.0],AUTHORITY["EPSG",32145]]		
BBmmy_Cable_line		
X	-5123000	10000
Y	-14708800	
M	-	-
Z	-	-
Coordinate System Description		
PROJCS["NAD_1983_StatePlane_Vermont_FIPS_4400",GEOGCS["GCS_North_American_1983",DATUM["D_North_American_1983",SPHEROID["GRS_1980",6378137.0,298.257222101]],PRIMEM["Greenwich",0.0],UNIT["Degree",0.0174532925199433]],PROJECTION["Transverse_Mercator"],PARAMETER["False_Easting",500000.0],PARAMETER["False_Northing",0.0],PARAMETER["Central_Meridian",-72.5],PARAMETER["Scale_Factor",0.9999642857142858],PARAMETER["Latitude_Of_Origin",42.5],UNIT["Meter",1.0],AUTHORITY["EPSG",32145]]		
BBmmy_Cable_poly		
X	-5123000	10000
Y	-14708800	
M	-	-
Z	-	-
Coordinate System Description		
PROJCS["NAD_1983_StatePlane_Vermont_FIPS_4400",GEOGCS["GCS_North_American_1983",DATUM["D_North_American_1983",SPHEROID["GRS_1980",6378137.0,298.257222101]],PRIMEM["Greenwich",0.0],UNIT["Degree",0.0174532925199433]],PROJECTION["Transverse_Mercator"],PARAMETER["False_Easting",500000.0],PARAMETER["False_Northing",0.0],PARAMETER["Central_Meridian",-72.5],PARAMETER["Scale_Factor",0.9999642857142858],PARAMETER["Latitude_Of_Origin",42.5],UNIT["Meter",1.0],AUTHORITY["EPSG",32145]]		
BBmmy_DSL_point		
X	-5123000	10000
Y	-14708800	
M	-	-
Z	-	-
Coordinate System Description		
PROJCS["NAD_1983_StatePlane_Vermont_FIPS_4400",GEOGCS["GCS_North_American_1983",DATUM["D_North_American_1983",SPHEROID["GRS_1980",6378137.0,298.257222101]],PRIMEM["Greenwich",0.0],UNIT["Degree",0.0174532925199433]],PROJECTION["Transverse_Mercator"],PARAMETER["False_Easting",500000.0],PARAMETER["False_Northing",0.0],PARAMETER["Central_Meridian",-72.5],PARAMETER["Scale_Factor",0.9999642857142858],PARAMETER["Latitude_Of_Origin",42.5],UNIT["Meter",1.0],AUTHORITY["EPSG",32145]]		
BBmmy_DSL_poly		
X	-5123000	10000
Y	-14708800	
M	-	-
Z	-	-
Coordinate System Description		
PROJCS["NAD_1983_StatePlane_Vermont_FIPS_4400",GEOGCS["GCS_North_American_1983",DATUM["D_North_American_1983",SPHEROID["GRS_1980",6378137.0,298.257222101]],PRIMEM["Greenwich",0.0],UNIT["Degree",0.0174532925199433]],PROJECTION["Transverse_Mercator"],PARAMETER["False_Easting",500000.0],PARAMETER["False_Northing",0.0],PARAMETER["Central_Meridian",-72.5],PARAMETER["Scale_Factor",0.9999642857142858],PARAMETER["Latitude_Of_Origin",42.5],UNIT["Meter",1.0],AUTHORITY["EPSG",32145]]		

reenwich",0.0],UNIT["Degree",0.0174532925199433]],PROJECTION["Transverse_Mercator"],PARAMETER["False_Easting",500000.0],PARAMETER["False_Northing",0.0],PARAMETER["Central_Meridian",-72.5],PARAMETER["Scale_Factor",0.9999642857142858],PARAMETER["Latitude_Of_Origin",42.5],UNIT["Meter",1.0],AUTHORITY["EPSG",32145]]

BBmmy_Fiber_point

X	-5123000	10000
Y	-14708800	
M	-	-
Z	-	-

Coordinate System Description

PROJCS["NAD_1983_StatePlane_Vermont_FIPS_4400",GEOGCS["GCS_North_American_1983",DATUM["D_North_American_1983",SPHEROID["GRS_1980",6378137.0,298.257222101]],PRIMEM["Greenwich",0.0],UNIT["Degree",0.0174532925199433]],PROJECTION["Transverse_Mercator"],PARAMETER["False_Easting",500000.0],PARAMETER["False_Northing",0.0],PARAMETER["Central_Meridian",-72.5],PARAMETER["Scale_Factor",0.9999642857142858],PARAMETER["Latitude_Of_Origin",42.5],UNIT["Meter",1.0],AUTHORITY["EPSG",32145]]

BBmmy_Fiber_poly

X	-5123000	10000
Y	-14708800	
M	-	-
Z	-	-

Coordinate System Description

PROJCS["NAD_1983_StatePlane_Vermont_FIPS_4400",GEOGCS["GCS_North_American_1983",DATUM["D_North_American_1983",SPHEROID["GRS_1980",6378137.0,298.257222101]],PRIMEM["Greenwich",0.0],UNIT["Degree",0.0174532925199433]],PROJECTION["Transverse_Mercator"],PARAMETER["False_Easting",500000.0],PARAMETER["False_Northing",0.0],PARAMETER["Central_Meridian",-72.5],PARAMETER["Scale_Factor",0.9999642857142858],PARAMETER["Latitude_Of_Origin",42.5],UNIT["Meter",1.0],AUTHORITY["EPSG",32145]]

BBmmy_LastMidBackH_point

X	-5123000	10000
Y	-14708800	
M	-	-
Z	0	6400.0000000000009

Coordinate System Description

PROJCS["NAD_1983_StatePlane_Vermont_FIPS_4400",GEOGCS["GCS_North_American_1983",DATUM["D_North_American_1983",SPHEROID["GRS_1980",6378137.0,298.257222101]],PRIMEM["Greenwich",0.0],UNIT["Degree",0.0174532925199433]],PROJECTION["Transverse_Mercator"],PARAMETER["False_Easting",500000.0],PARAMETER["False_Northing",0.0],PARAMETER["Central_Meridian",-72.5],PARAMETER["Scale_Factor",0.9999642857142858],PARAMETER["Latitude_Of_Origin",42.5],UNIT["Meter",1.0],AUTHORITY["EPSG",32145]]

BBmmy_OtherWireline_point

X	-5123000	10000
Y	-14708800	
M	-	-
Z	-	-

Coordinate System Description

PROJCS["NAD_1983_StatePlane_Vermont_FIPS_4400",GEOGCS["GCS_North_American_1983",DATUM["D_North_American_1983",SPHEROID["GRS_1980",6378137.0,298.257222101]],PRIMEM["Greenwich",0.0],UNIT["Degree",0.0174532925199433]],PROJECTION["Transverse_Mercator"],PARAMETER["False_Easting",500000.0],PARAMETER["False_Northing",0.0],PARAMETER["Central_Meridian",-72.5],PARAMETER["Scale_Factor",0.9999642857142858],PARAMETER["Latitude_Of_Origin",42.5],UNIT["Meter",1.0],AUTHORITY["EPSG",32145]]

BBmmy_Output_Addresses

X	-5123000	10000
----------	----------	-------

Y	-14708800	
M	-	-
Z	-	-
Coordinate System Description		
PROJCS["NAD_1983_StatePlane_Vermont_FIPS_4400",GEOGCS["GCS_North_American_1983",DATUM["D_North_American_1983",SPHEROID["GRS_1980",6378137.0,298.257222101]],PRIMEM["Greenwich",0.0],UNIT["Degree",0.0174532925199433]],PROJECTION["Transverse_Mercator"],PARAMETER["False_Easting",500000.0],PARAMETER["False_Northing",0.0],PARAMETER["Central_Meridian",-72.5],PARAMETER["Scale_Factor",0.9999642857142858],PARAMETER["Latitude_Of_Origin",42.5],UNIT["Meter",1.0],AUTHORITY["EPSG",32145]]		
BBmmy_Output_Anchor		
X	-5123000	10000
Y	-14708800	
M	-	-
Z	-	-
Coordinate System Description		
PROJCS["NAD_1983_StatePlane_Vermont_FIPS_4400",GEOGCS["GCS_North_American_1983",DATUM["D_North_American_1983",SPHEROID["GRS_1980",6378137.0,298.257222101]],PRIMEM["Greenwich",0.0],UNIT["Degree",0.0174532925199433]],PROJECTION["Transverse_Mercator"],PARAMETER["False_Easting",500000.0],PARAMETER["False_Northing",0.0],PARAMETER["Central_Meridian",-72.5],PARAMETER["Scale_Factor",0.9999642857142858],PARAMETER["Latitude_Of_Origin",42.5],UNIT["Meter",1.0],AUTHORITY["EPSG",32145]]		
BBmmy_Output_Blocks		
X	-5123000	10000
Y	-14708800	
M	-	-
Z	-	-
Coordinate System Description		
PROJCS["NAD_1983_StatePlane_Vermont_FIPS_4400",GEOGCS["GCS_North_American_1983",DATUM["D_North_American_1983",SPHEROID["GRS_1980",6378137.0,298.257222101]],PRIMEM["Greenwich",0.0],UNIT["Degree",0.0174532925199433]],PROJECTION["Transverse_Mercator"],PARAMETER["False_Easting",500000.0],PARAMETER["False_Northing",0.0],PARAMETER["Central_Meridian",-72.5],PARAMETER["Scale_Factor",0.9999642857142858],PARAMETER["Latitude_Of_Origin",42.5],UNIT["Meter",1.0],AUTHORITY["EPSG",32145]]		
BBmmy_Output_Streets		
X	-5123000	10000
Y	-14708800	
M	-	-
Z	-	-
Coordinate System Description		
PROJCS["NAD_1983_StatePlane_Vermont_FIPS_4400",GEOGCS["GCS_North_American_1983",DATUM["D_North_American_1983",SPHEROID["GRS_1980",6378137.0,298.257222101]],PRIMEM["Greenwich",0.0],UNIT["Degree",0.0174532925199433]],PROJECTION["Transverse_Mercator"],PARAMETER["False_Easting",500000.0],PARAMETER["False_Northing",0.0],PARAMETER["Central_Meridian",-72.5],PARAMETER["Scale_Factor",0.9999642857142858],PARAMETER["Latitude_Of_Origin",42.5],UNIT["Meter",1.0],AUTHORITY["EPSG",32145]]		
BBmmy_Wireless_point		
X	-5123000	10000
Y	-14708800	
M	-	-
Z	-100000	10000

Coordinate System Description		
PROJCS["NAD_1983_StatePlane_Vermont_FIPS_4400",GEOGCS["GCS_North_American_1983",DATUM["D_North_American_1983",SPHEROID["GRS_1980",6378137.0,298.257222101]],PRIMEM["Greenwich",0.0],UNIT["Degree",0.0174532925199433]],PROJECTION["Transverse_Mercator"],PARAMETER["False_Easting",500000.0],PARAMETER["False_Northing",0.0],PARAMETER["Central_Meridian",-72.5],PARAMETER["Scale_Factor",0.9999642857142858],PARAMETER["Latitude_Of_Origin",42.5],UNIT["Meter",1.0],AUTHORITY["EPSG",32145]]		
BBmmy_Wireless_poly		
X	-5123000	10000
Y	-14708800	
M	-	-
Z	-	-
Coordinate System Description		
PROJCS["NAD_1983_StatePlane_Vermont_FIPS_4400",GEOGCS["GCS_North_American_1983",DATUM["D_North_American_1983",SPHEROID["GRS_1980",6378137.0,298.257222101]],PRIMEM["Greenwich",0.0],UNIT["Degree",0.0174532925199433]],PROJECTION["Transverse_Mercator"],PARAMETER["False_Easting",500000.0],PARAMETER["False_Northing",0.0],PARAMETER["Central_Meridian",-72.5],PARAMETER["Scale_Factor",0.9999642857142858],PARAMETER["Latitude_Of_Origin",42.5],UNIT["Meter",1.0],AUTHORITY["EPSG",32145]]		

[Back to Top](#)

ArcGIS Diagrammer is prototype application and is not supported by ESRI. The commands associated with this application and the output generated by those commands are not to be used in a production environment. ESRI is not responsible for errors, omission or any damages resulting from the use of application and associated output. Use of this application is conditional on the acceptance of this statement.